

Orange County Park Scores

Orange County Park Scores



Place to Play and Rejuvenate

Imagine living in a community where the design and layout allowed you to quickly access protected natural lands, tot lots, and recreational trails. Parks play an important role in our life. Not only do parklands allow residents places to enjoy nature, they also boost the economy, increase property values, and reduce the cost for public services.

“City parks and open space improve our physical and psychological health, strengthen our communities, and make our cities and neighborhoods more attractive places to live and work,” according to The Trust for Public Land’s Benefits of Parks. It further explains “U.S. voters have repeatedly shown their willingness to raise their own taxes to pay for new or improved parks.”

Benefits of Parks

Parks have many benefits, including:

- Increasing the value of neighboring residential property
- Providing exceptional opportunities for children to learn, experience, and understand nature
- Improving our environment—including filtering pollutants from our air, soil, and water
- Creating community resources and activity hubs, like urban gardens and outdoor gyms
- Encouraging residents to exercise more and live healthier lifestyles

Sources: Benefits of Parks, The Trust for Public Land
Nature Deficit Disorder, Richard Louv



Friends of Harbors, Beaches, and Parks works to protect the natural lands, waterways, and beaches of Orange County.

www.FHBP.org

ORANGE COUNTY’S TOP 3 BEST REGIONAL PARK SCORES

1. Laguna Beach (79.2 acres/1000 residents)
2. Irvine (56.2)
3. Rancho Santa Margarita (43.9)



Orange County Park Scores

For our purposes Friends of Harbors, Beaches, and Parks looked at the Park Score for each city in Orange County. Three analyses were conducted. The first analysis included city-owned parkland only. The second final analysis included city- and county-owned parkland. The final analysis included all publicly owned protected lands and beaches, even those with restricted access, as well as lands protected by conservation non-profits. Only 13 cities met or exceeded the 3+ acres in the city-only analysis, while 24 met or exceeded it in the other two analyses.



Measuring Park Scores

Park Scores measure how many acres of protected parkland there are per 1,000 residents. The 1975 Quimby Act established a statewide requirement that developers set aside land, donate conservation easements, or pay fees for park improvements (called park in lieu fees). Revenues generated through the Quimby Act cannot be used for the operation and maintenance of park facilities. Many jurisdictions have enacted local ordinances that require the maximum number of park acres per person allowed by the Quimby Act or 5 acres per 1,000 residents.

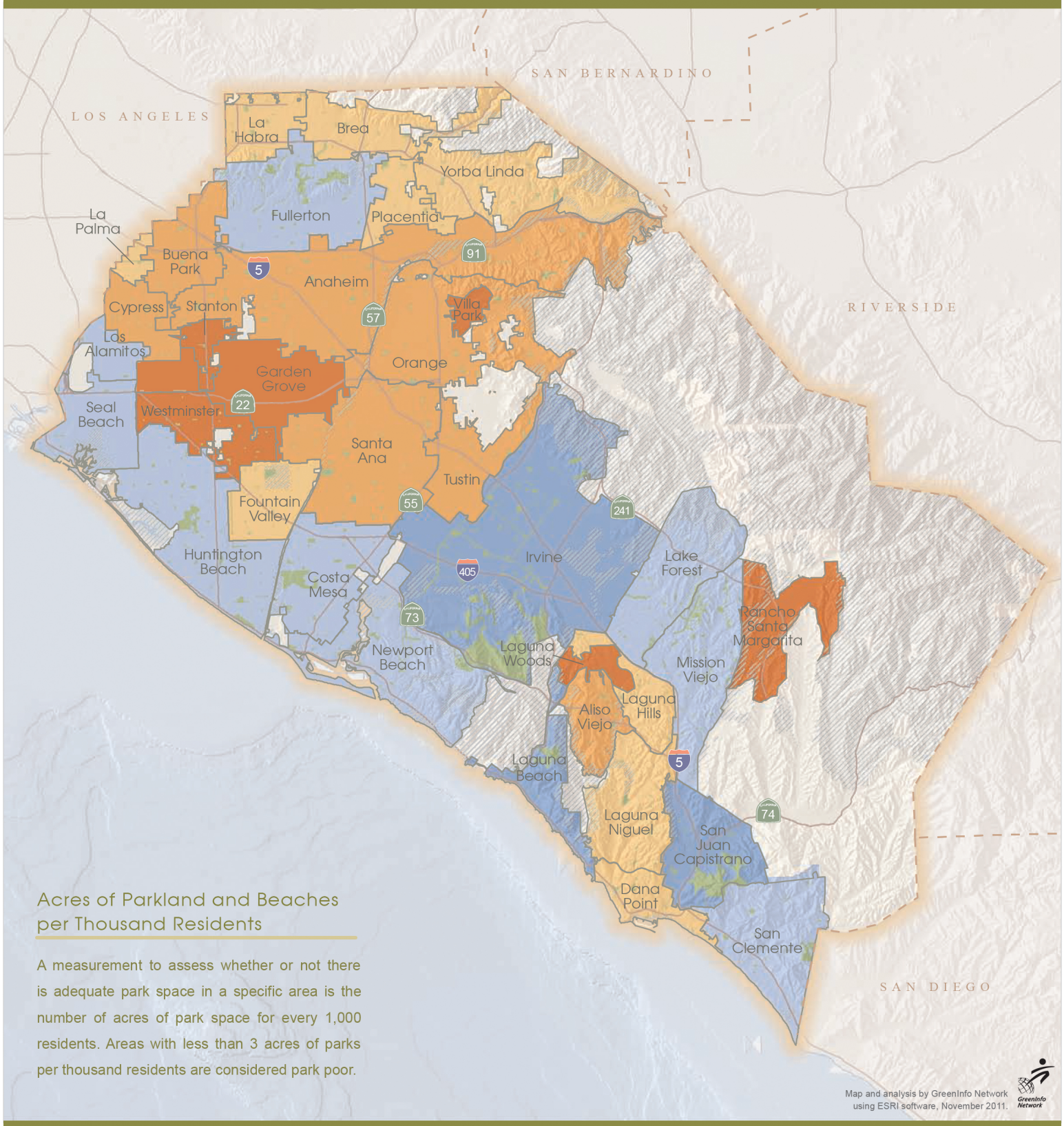
The scores for this analysis were calculated using the 2010 Census data and the California Protected Areas Database. See the additional pages in this flyer for a map and tables which illustrate our results.





Park Score by City

Includes City Ownerships



Acres of Parkland and Beaches per Thousand Residents



Acres of parkland and beaches per thousand residents includes land with public access or restricted public access. Parkland and beach ownership includes city agencies only.
 Data Sources: Demographics - 2010 census, Park/Green Space - CPAD v1.6, calands.org.

Other Features



ORANGE COUNTY – PARK SCORE BY CITY

Includes City Park Ownerships

Name	Total Population	Acres of City Parkland	Acres of City Parks per Thousand Residents
Aliso Viejo	47,823	94	1.95
Anaheim	336,265	507	1.50
Brea	39,282	117	2.98
Buena Park	80,530	82	1.02
Costa Mesa	109,960	671	6.10
Cypress	47,802	88	1.83
Dana Point	33,351	97	2.89
Fountain Valley	55,313	160	2.89
Fullerton	135,161	877	6.49
Garden Grove	170,883	172	1.00
Huntington Beach	189,992	727	3.83
Irvine	212,375	4,003	18.85
La Habra	60,239	127	2.11
La Palma	15,568	36	2.35
Laguna Beach	22,723	353	15.52
Laguna Hills	30,344	71	2.34
Laguna Niguel	62,979	160	2.54
Laguna Woods	16,192	3	0.21
Lake Forest	77,264	281	3.64
Los Alamitos	11,449	37	3.17
Mission Viejo	93,305	672	7.20
Newport Beach	85,186	499	5.86
Orange	136,416	243	1.78
Placentia	50,533	108	2.15
Rancho Santa Margarita	47,853	0	0.00
San Clemente	63,522	341	5.37
San Juan Capistrano	34,593	1,138	32.90
Santa Ana	324,528	356	1.10
Seal Beach	24,168	120	4.98
Stanton	38,186	24	0.62
Tustin	75,540	102	1.35
Villa Park	5,812	0	0.00
Westminster	89,701	85	0.95
Yorba Linda	64,234	176	2.74

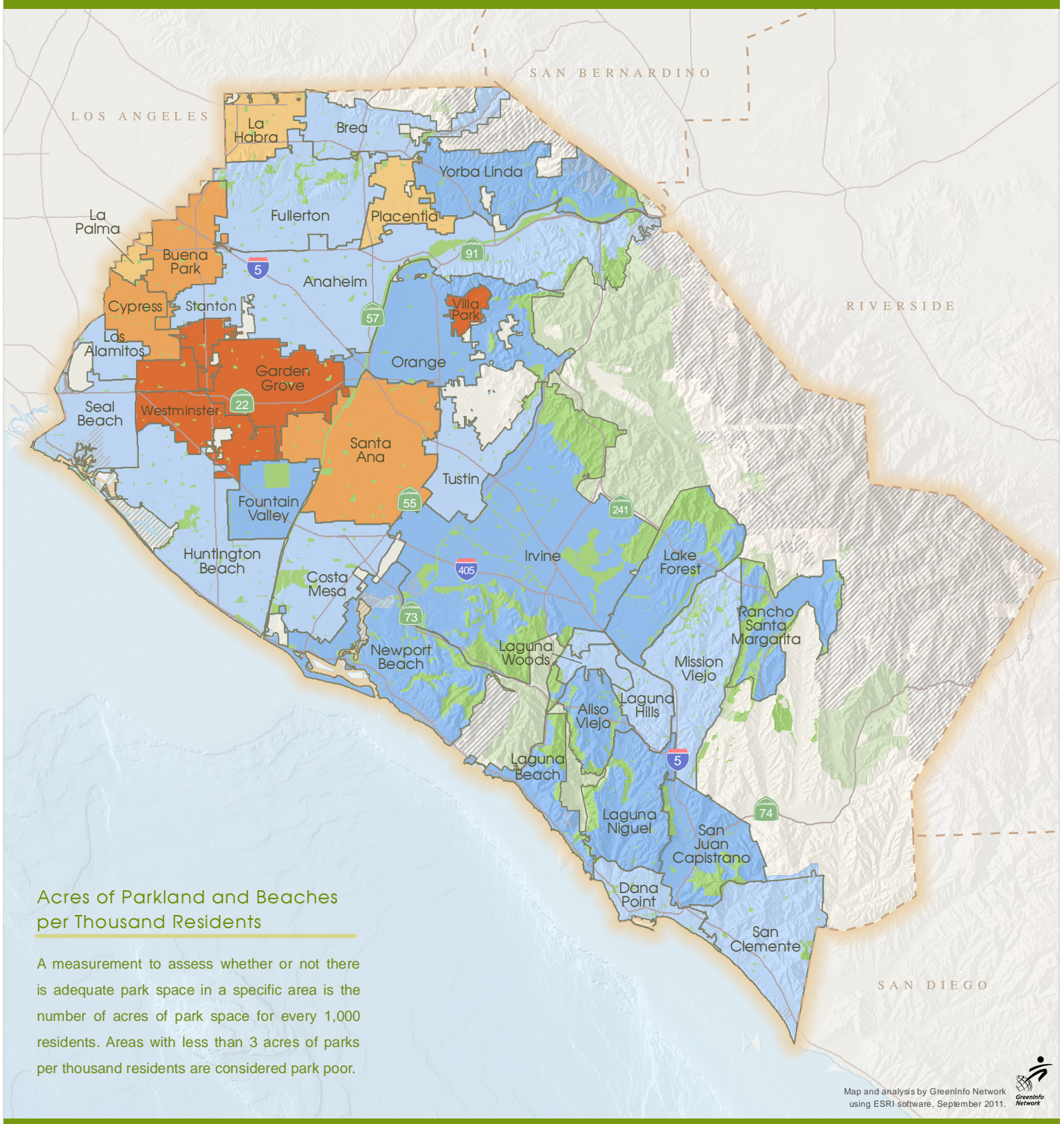
Parks and open space data was calculated from GreenInfo Network's California Protected Areas Database (CPAD) version 1.6, January 2011 www.calands.org. Acres of parkland and beaches per thousand residents includes land with public access or restricted public access. Parkland and beach ownership includes city agencies only.

Population Counts were calculated from 2010 Census Short Form Data, <http://factfinder2.census.gov>.



Park Score by City

Includes City and County Park Ownerships



Acres of Parkland and Beaches per Thousand Residents



Acres of parkland and beaches per thousand residents includes land with public access or restricted public access. Parkland and beach ownership includes city and county agencies only. Data Sources: Demographics - 2010 census, Park/Green Space - CPAD v1.6, calands.org.

Other Features



ORANGE COUNTY – PARK SCORE BY CITY

Includes City and County Park Ownerships

Name	Total Population	Acres of City or County Parkland	Acres of City or County Parks per Thousand Residents
Aliso Viejo	47,823	930	19.4
Anaheim	336,265	2,761	8.2
Brea	39,282	231	5.9
Buena Park	80,530	129	1.6
Costa Mesa	109,960	963	8.8
Cypress	47,802	88	1.8
Dana Point	33,351	227	6.8
Fountain Valley	55,313	686	12.4
Fullerton	135,161	1,110	8.2
Garden Grove	170,883	172	1.0
Huntington Beach	189,992	881	4.6
Irvine	212,375	11,928	56.2
La Habra	60,239	127	2.1
La Palma	15,568	36	2.3
Laguna Beach	22,723	1,801	79.2
Laguna Hills	30,344	111	3.7
Laguna Niguel	62,979	1,033	16.4
Laguna Woods	16,192	106	6.5
Lake Forest	77,264	3,066	39.7
Los Alamitos	11,449	37	3.2
Mission Viejo	93,305	823	8.8
Newport Beach	85,186	2,258	26.5
Orange	136,416	1,443	10.6
Placentia	50,533	111	2.2
Rancho Santa Margarita	47,853	2,102	43.9
San Clemente	63,522	343	5.4
San Juan Capistrano	34,593	1,412	40.8
Santa Ana	324,528	603	1.9
Seal Beach	24,168	142	5.9
Stanton	38,186	24	0.6
Tustin	75,540	259	3.4
Villa Park	5,812	0	0.0
Westminster	89,701	85	1.0
Yorba Linda	64,234	918	14.3

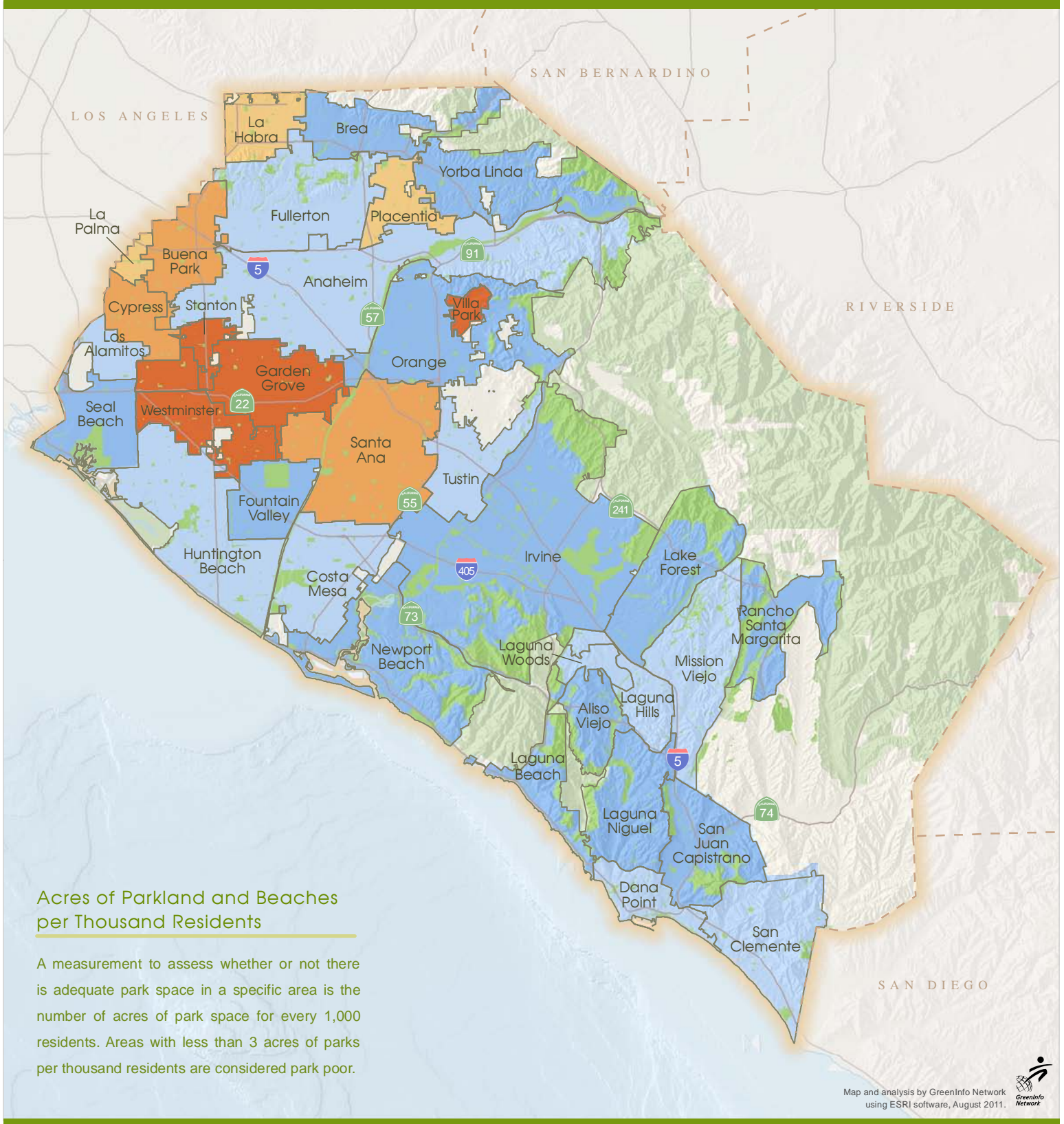
Parks and open space data was calculated from GreenInfo Network's California Protected Areas Database (CPAD) version 1.6, January 2011 www.calands.org. Acres of parkland and beaches per thousand residents includes land with public access or restricted public access. Parkland and beach ownership includes city and county agencies only.

Population Counts were calculated from 2010 Census Short Form Data, <http://factfinder2.census.gov>.



Park Score by City

Includes All Park Ownerships



Acres of Parkland and Beaches per Thousand Residents

A measurement to assess whether or not there is adequate park space in a specific area is the number of acres of park space for every 1,000 residents. Areas with less than 3 acres of parks per thousand residents are considered park poor.

Acres of Parkland and Beaches per Thousand Residents



Acres of parkland and beaches per thousand residents includes land with public access or restricted public access. Parkland and beach ownership includes the following agencies: non-governmental organizations, city, county, state and federal governments.
Data Sources: Demographics - 2010 census, Park/Green Space - CPAD v1.6, calands.org.

Other Features



Map and analysis by GreenInfo Network using ESRI software, August 2011.



ORANGE COUNTY – PARK SCORE BY CITY

Includes All Park Ownerships

Name	Total Population	Acres Parkland	Acres of Parks per Thousand Residents
Aliso Viejo	47,823	930	19.4
Anaheim	336,265	3,340	9.9
Brea	39,282	665	16.9
Buena Park	80,530	129	1.6
Costa Mesa	109,960	963	8.8
Cypress	47,802	88	1.8
Dana Point	33,351	302	9.1
Fountain Valley	55,313	686	12.4
Fullerton	135,161	1,115	8.2
Garden Grove	170,883	172	1.0
Huntington Beach	189,992	1,208	6.4
Irvine	212,375	12,127	57.1
La Habra	60,239	127	2.1
La Palma	15,568	36	2.3
Laguna Beach	22,723	1,950	85.8
Laguna Hills	30,344	111	3.7
Laguna Niguel	62,979	1,033	16.4
Laguna Woods	16,192	106	6.5
Lake Forest	77,264	3,066	39.7
Los Alamitos	11,449	37	3.2
Mission Viejo	93,305	823	8.8
Newport Beach	85,186	3,464	40.7
Orange	136,416	1,443	10.6
Placentia	50,533	111	2.2
Rancho Santa Margarita	47,853	2,131	44.5
San Clemente	63,522	463	7.3
San Juan Capistrano	34,593	1,412	40.8
Santa Ana	324,528	603	1.9
Seal Beach	24,168	1,078	44.6
Stanton	38,186	24	0.6
Tustin	75,540	259	3.4
Villa Park	5,812	0	0.0
Westminster	89,701	85	1.0
Yorba Linda	64,234	2,343	36.5

Parks and open space data was calculated from GreenInfo Network's California Protected Areas Database (CPAD) version 1.6, January 2011 www.calands.org. Acres of parkland and beaches per thousand residents includes land with public access or restricted public access. Parkland and beach ownership includes the following agencies: non-governmental organizations, city, county, state and federal governments.

Population Counts were calculated from 2010 Census Short Form Data, <http://factfinder2.census.gov>.