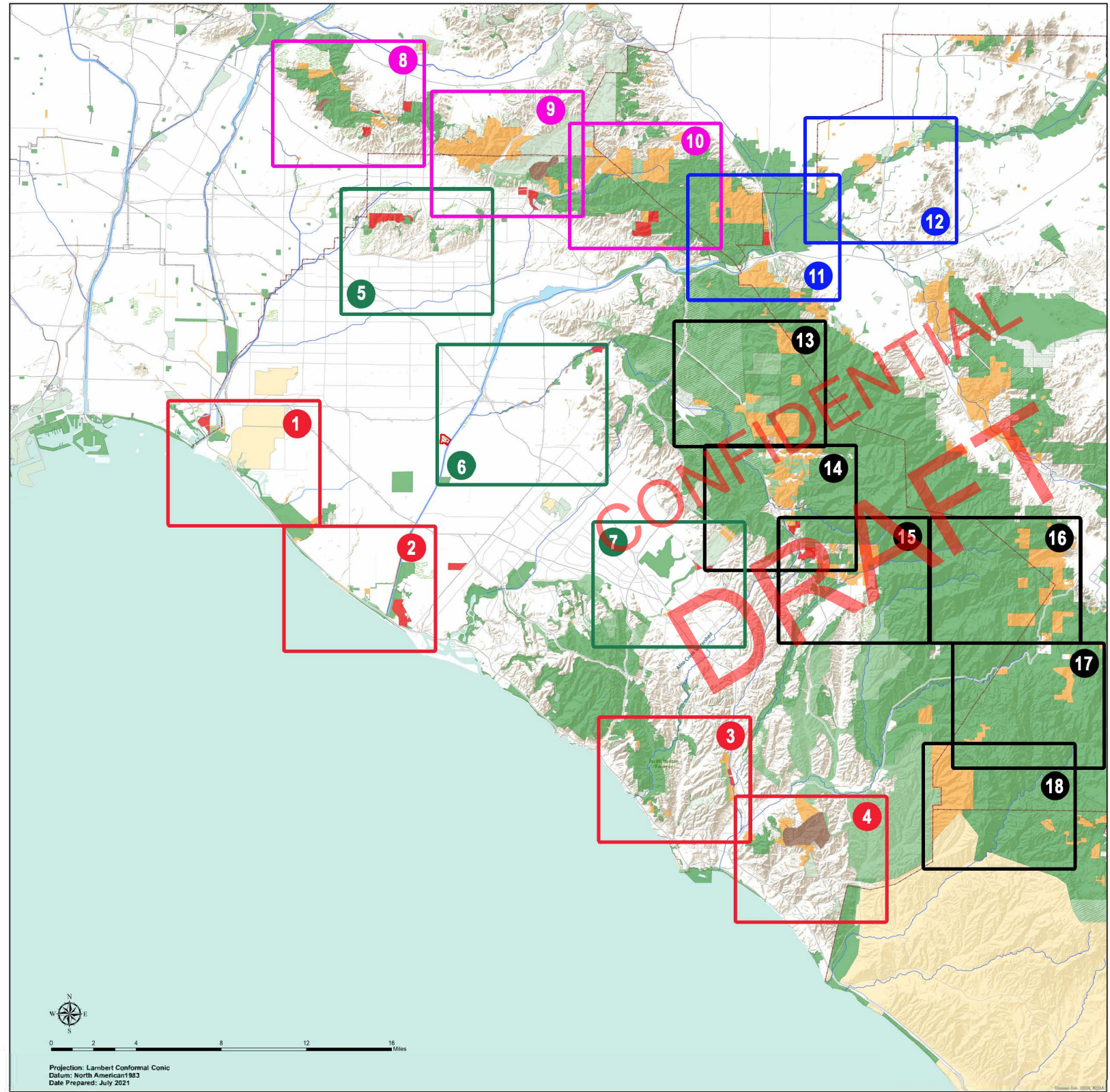


30x30 Acquisition Opportunities

Governor Newsom's Executive Order N-82-20 sets a goal for the State to protect 30% of California's lands and coastal waters by the year 2030. It is commonly known as the "30x30" (30 by 30) campaign. With more than 80 conservation and community groups supporting the Friends of Harbors, Beaches, and Parks (FHBP) Green Vision Map, opportunities exist already for preservation. In partnership with Hills For Everyone, the Green Vision Map has been segmented and lists property by property opportunities for acquisition. The 30x30 campaign would only purchase land from willing sellers. Parcels included are a minimum of 15 acres and are shown within 18 different geographies on the existing Green Vision Map. We want the State of California to know we are organized and ready for conservation funding with 292 properties totalling more than 33,200 acres.



OVERALL MAP LEGEND

COASTAL

- 1 - North (254 acres)
- 2 - Central (461 acres)
- 3 - Southern Central (445 acres)
- 4 - South (879 acres)

SANTA ANA RIVER

- 11 - Canyon (3,233 acres)
- 12 - River (659 acres)

URBAN

- 5 - North (510 acres)
- 6 - Santiago Creek (244 acres)
- 7 - Central (1,350 acres)

FOOTHILLS

- 13 - North (2,616 acres)
- 14 - North Central (1,597 acres)
- 15 - Central (1,463 acres)
- 16 - East (3,851 acres)
- 17 - Southeast (568 acres)
- 18 - South (3,381 acres)

PUENTE-CHINO HILLS

- 8 - West (743 acres)
- 9 - Central (7,079 acres)
- 10 - East (3,947 acres)

MAP TOTALS

292 Properties
33,280 Acres



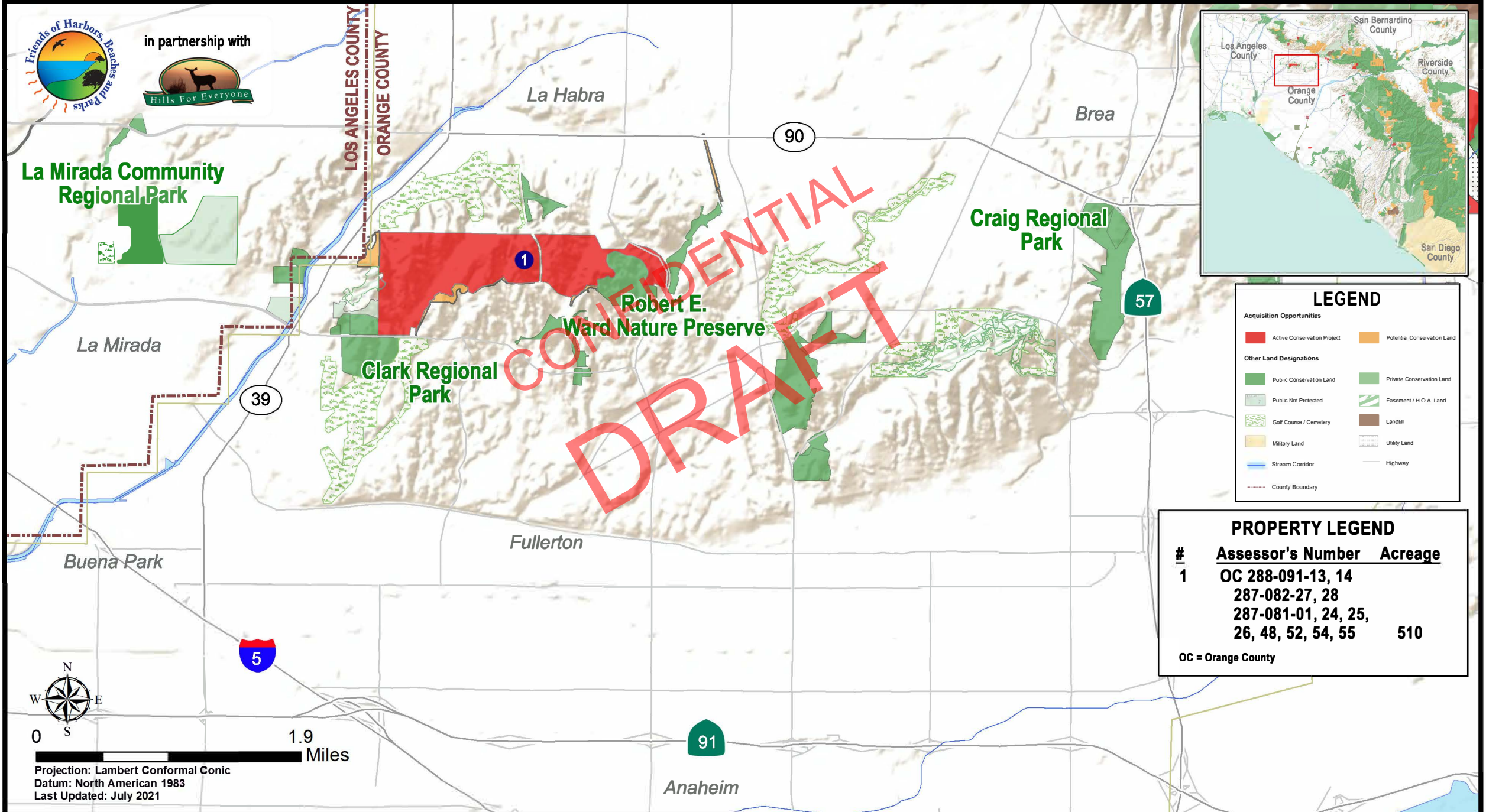
in partnership with



ORANGE COUNTY Green Vision Map

Urban (North)

Map 5 of 18



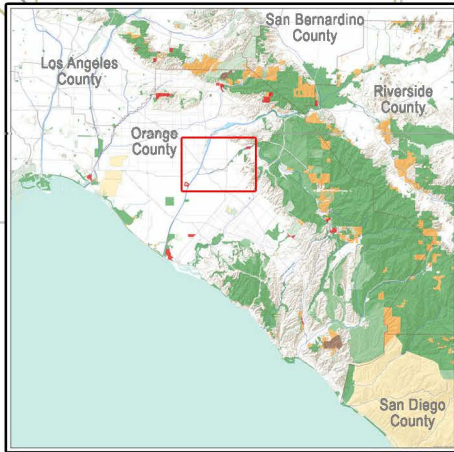
ORANGE COUNTY Green Vision Map

Urban (Santiago Creek)

Map 6 of 18



in partnership with



LEGEND

Acquisition Opportunities

- Active Conservation Project
- Potential Conservation Land

Other Land Designations

- Public Conservation Land
- Private Conservation Land
- Public Not Protected
- Easement / H.O.A. Land
- Golf Course / Cemetery
- Landfill
- Military Land
- Utility Land
- Stream Corridor
- Highway
- County Boundary



0 1.9 Miles

Projection: Lambert Conformal Conic
Datum: North American 1983
Last Updated: July 2021

CONFIDENTIAL DRAFT

PROPERTY LEGEND

#	Assessor's Number	Acreage
1	OC 198-291-01, 02, 03, 04, 05, & 08	97
2	OC 390-021-03	16
3	OC 370-231-13 & 15	15
4	OC 093-280-30, 31, 093-280-07, 27, 29, 370-011-08, 18, 21, 22, 370-041-12, 25, 370-041-19 & 379-451-24	116

OC = Orange County

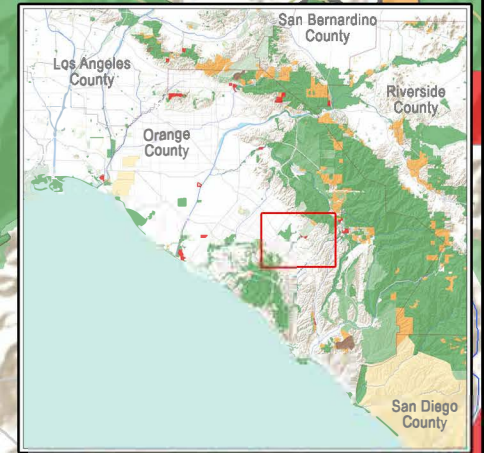
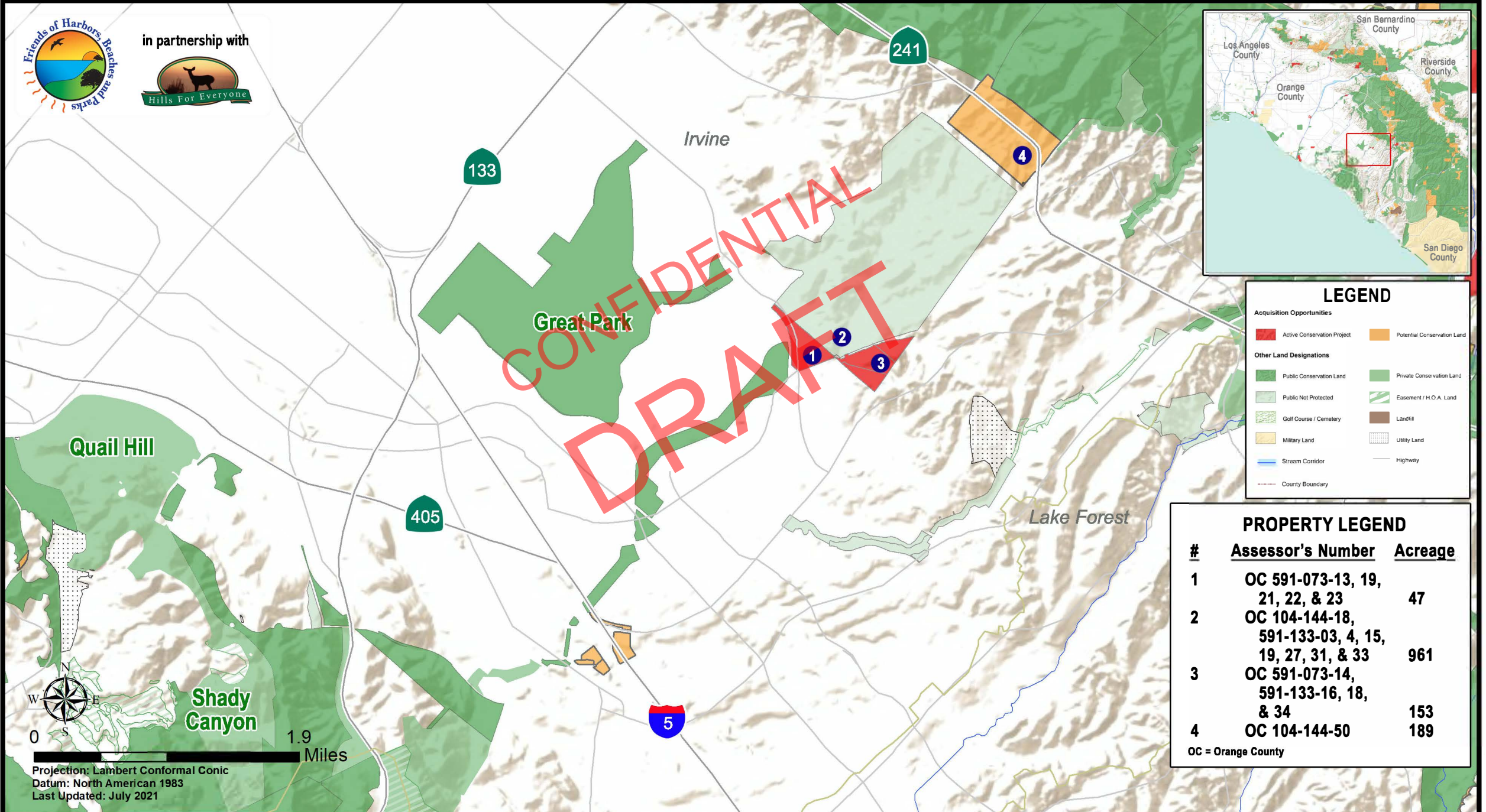
ORANGE COUNTY Green Vision Map

Urban (Central)

Map 7 of 18



in partnership with



LEGEND

Acquisition Opportunities

- Active Conservation Project
- Potential Conservation Land

Other Land Designations

- Public Conservation Land
- Public Not Protected
- Golf Course / Cemetery
- Military Land
- Stream Corridor
- County Boundary
- Private Conservation Land
- Easement / H.O.A. Land
- Landfill
- Utility Land
- Highway

PROPERTY LEGEND

#	Assessor's Number	Acreage
1	OC 591-073-13, 19, 21, 22, & 23	47
2	OC 104-144-18, 591-133-03, 4, 15, 19, 27, 31, & 33	961
3	OC 591-073-14, 591-133-16, 18, & 34	153
4	OC 104-144-50	189

OC = Orange County



Projection: Lambert Conformal Conic
Datum: North American 1983
Last Updated: July 2021

1.9 Miles