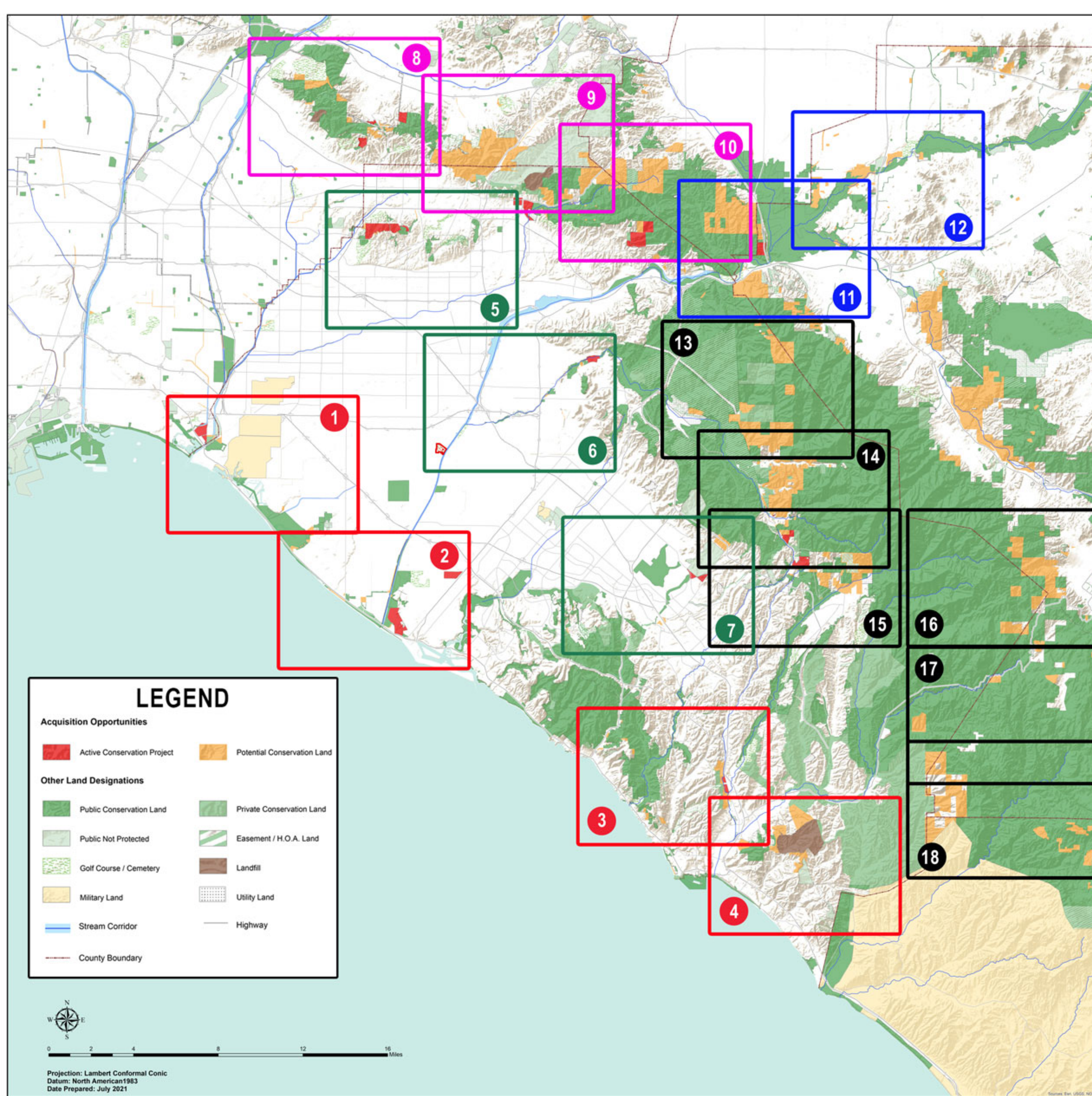


30x30 Acquisition Opportunities

Governor Newsom's Executive Order N-82-20 sets a goal for the State to protect 30% of California's lands and coastal waters by the year 2030. It is commonly known as the "30x30" (30 by 30) campaign. With more than 80 conservation and community groups supporting the Friends of Harbors, Beaches, and Parks (FHBP) Green Vision Map, opportunities exist already for preservation. In partnership with Hills For Everyone, the Green Vision Map has been segmented and lists property by property opportunities for acquisition. The 30x30 campaign would only purchase land from willing sellers. Parcels included are a minimum of 15 acres* and are shown within 18 different geographies on the existing Green Vision Map. We want the State of California to know we are organized and ready for conservation funding with 275 properties totalling more than 30,000 acres.



OVERALL MAP LEGEND

COASTAL

- 1 - North (252 acres)
- 2 - Central (461 acres)
- 3 - Southern Central (444 acres)
- 4 - South (879 acres)

SANTA ANA RIVER

- 11 - Canyon (3,253 acres)
- 12 - River (805 acres)

FOOTHILLS

- 13 - North (2,623 acres)
- 14 - North Central (1,597 acres)
- 15 - Central (1,463 acres)
- 16 - East (2,492 acres)
- 17 - Southeast (275 acres)
- 18 - South (2,208 acres)

URBAN

- 5 - North (510 acres)
- 6 - Santiago Creek (228 acres)
- 7 - Central (1,352 acres)

PUENTE-CHINO HILLS

- 8 - West (749 acres)
- 9 - Central (7,100 acres)
- 10 - East (3,821 acres)

MAP TOTALS

275 Properties
30,512 Acres

LEGEND

- | | |
|----------------------------------|-----------------------------|
| Acquisition Opportunities | |
| Active Conservation Project | Potential Conservation Land |
| Other Land Designations | |
| Public Conservation Land | Private Conservation Land |
| Public Not Protected | Easement / H.O.A. Land |
| Golf Course / Cemetery | Landfill |
| Military Land | Utility Land |
| Stream Corridor | Highway |
| County Boundary | |



0 2 4 8 12 16 Miles

Projection: Lambert Conformal Conic
Datum: North American1983
Date Prepared: July 2021

*Two exceptions to this 15-acre minimum are the final acquisitions for the Bolsa Chica Ecological Reserve. Both of which are under 15 acres, but complete the vision for protected lands in this coastal area.



in partnership with

