



in partnership with

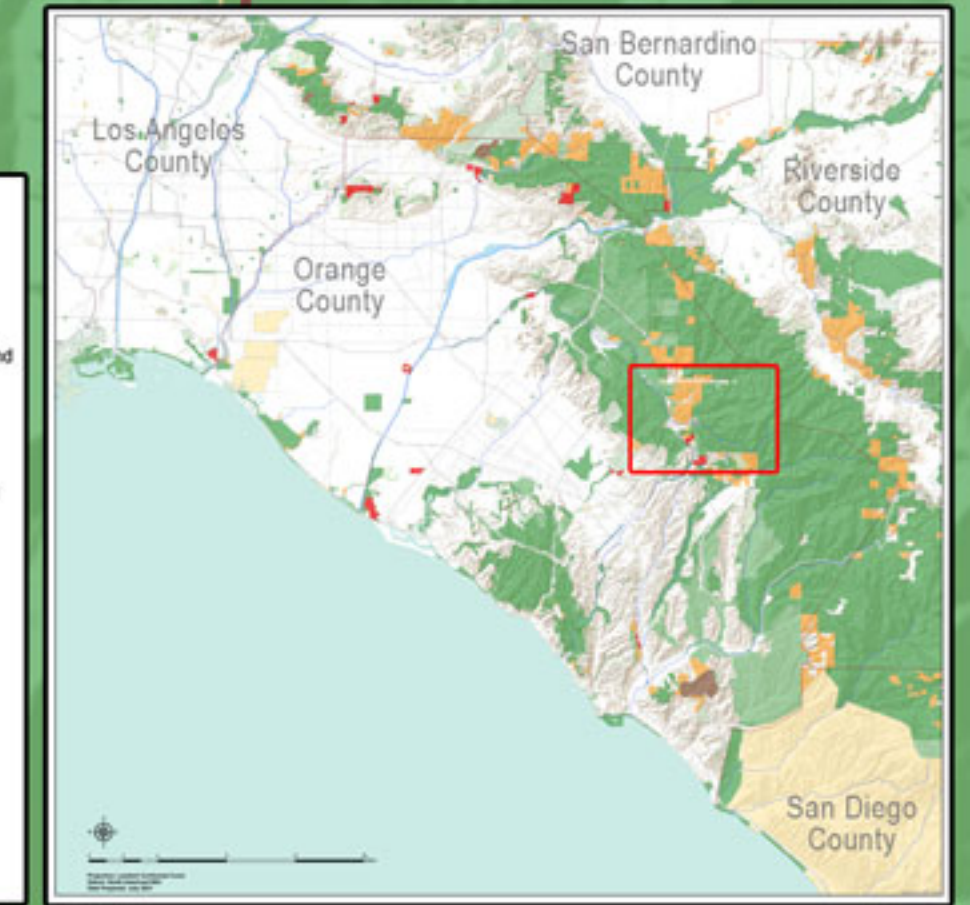


Limestone Canyon
Wilderness Park

Cleveland
National Forest

Whiting Ranch
Wilderness Park

O'Neill
Regional Park



LEGEND

Acquisition Opportunities

- Active Conservation Project
- Potential Conservation Land

Other Land Designations

- Public Conservation Land
- Public Not Protected
- Golf Course / Cemetery
- Military Land
- Stream Corridor
- County Boundary
- Private Conservation Land
- Easement / H.O.A. Land
- Landfill
- Utility Land
- Highway

PROPERTY LEGEND

| # | Assessor's Number | Acreage | # | Assessor's Number | Acreage |
|----|---|---------|----|-------------------|---------|
| 1 | OC 876-011-04 | 20 | 17 | OC 105-201-42 | 20 |
| 2 | OC 105-051-18, 867-011-07, 08, 11 & 18 | 257 | 18 | OC 105-201-23 | 20 |
| 3 | OC 876-011-10 | 17 | 19 | OC 105-201-41 | 26 |
| 4 | OC 876-011-12 | 20 | 20 | OC 105-201-74 | 40 |
| 5 | OC 105-051-17 | 40 | 21 | OC 105-201-17 | 20 |
| 6 | OC 876-011-17 | 20 | 22 | OC 105-201-26 | 20 |
| 7 | OC 876-011-20 | 20 | 23 | OC 105-201-25 | 20 |
| 8 | OC 876-011-15 | 20 | 24 | OC 105-201-24 | 20 |
| 9 | OC 876-021-18 | 159 | 25 | OC 105-201-16 | 40 |
| 10 | OC 105-201-97 | 36 | 26 | OC 105-201-04 | 20 |
| 11 | OC 876-021-04, 5, & 15 | 55 | 27 | OC 105-201-72 | 38 |
| 12 | OC 876-021-06 | 20 | 28 | OC 105-201-73 | 82 |
| 13 | OC 105-051-58 | 60 | 29 | OC 105-202-67 | 20 |
| 14 | OC 105-051-21, 33 & 57 | 80 | 30 | OC 105-202-68 | 32 |
| 15 | OC 105-051-20 | 20 | 31 | OC 105-202-70 | 60 |
| 16 | OC 105-201-06, 31 66 & 67 | 148 | 32 | OC 867-071-04 | 37 |
| | | | 33 | OC 867-021-08 | 34 |
| | | | 34 | OC 858-011-10 | 56 |

OC = Orange County

0 1.9 Miles

Projection: Lambert Conformal Conic
Datum: North American 1983
Last Updated: July 2021