



Green Vision Project and Natural Lands Acquisition Opportunities

By: Claire and Melanie Schlotterbeck
Friends of Harbors, Beaches and Parks

© 2008



California's Uniqueness



Glacier Free



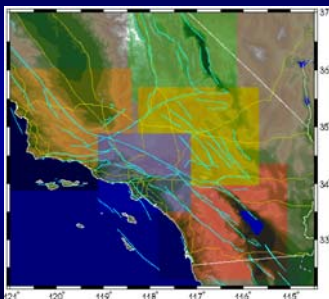
Gift of Time



Mediterranean Climate



Geologic Uncertainty



Courtesy of Southern California Earthquake Data Center

Endemic Species Scorecard



0



2,141

0' to 11,000' in 50 miles

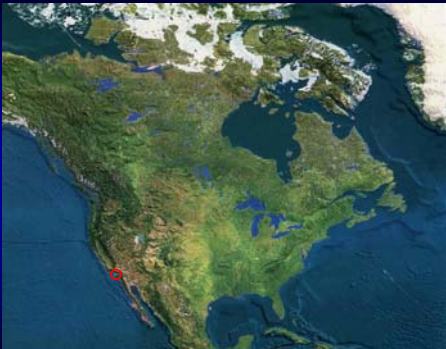




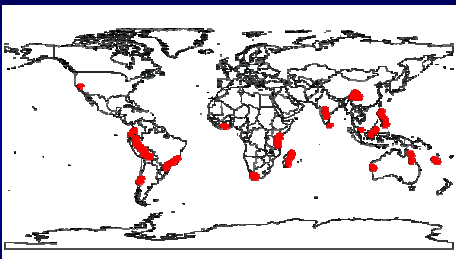
Orange County Register

March 27, 2008

"3.1 earthquake produces jolt in coastal O.C."

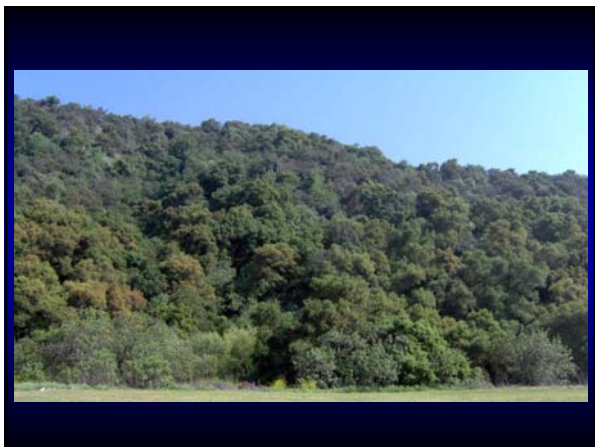


Hotspots of Biodiversity









Southern California from Space



Southern California at Night



Gap Map of Orange County



Successes



Successes



Partnerships

- Local and State Governments
 - Cities
 - Counties
 - Elected Officials
- Resource Agencies
 - Department of Parks and Recreation
 - Department of Fish & Game/Wildlife Conservation Board
 - California Coastal Conservancy
 - U.S. Forest Service
 - U.S. Fish and Wildlife
 - U.S. Army Corps of Engineers

Friends of Harbors, Beaches & Parks

"To promote, protect and enhance the harbors, beaches, parks, trails, open spaces, natural preserves and historic sites in Orange County."



Supporting Organizations

Acorn Naturalists
Amigos de Bolsa Chica
Audubon Starr Ranch
Banning Ranch Task Force of the Sierra Club
Bolsa Chica Land Trust
California Chapter of Republicans for Environmental Protection
California Cultural Resource Alliance
California Cultural Resource Preservation Alliance
California Native Plant Society - OC Chapter
California Trails & Greenways
Canyon Lands Conservation Fund
Earth Resource Foundation
Environmental Coalition of the Great Park
Endangered Habitats League
Equestrian Coalition of Orange County
Friends of Coyote Hills
Friends of the Foothills
Friends of Harbors, Beaches and Parks

Supporting Organizations

Friends of Newport Coast
Great Park Conservancy
Hills For Everyone
Hobo-Aliso Task Force
Huntington Beach Tree Society
Huntington Beach Wetlands Conservancy
Inland Empire Water Keeper
Inside the Outdoors
Inter Canyon League
InterCanyon Fire Safe Council
Irvine Ranch Land Reserve Trust
Laguna Canyon Conservancy
Laguna Canyon Foundation
Laguna Greenbelt
Latino Health Access
League of Women Voters
Los Cerritos Wetlands Land Trust
Nature Reserve of Orange County

Supporting Organizations

Newport Bay Naturalist and Friends
Newport Surfrider
OC Interfaith Coalition for Environment
Orange Coast River Park
Orange County Coastkeeper
Permaculture Institute
Planning and Conservation League
Puente-Chino Hills Task Force
Rural Canyon Conservation Fund
Saddleback Canyon Conservancy
Santa Ana Mountains Task Force
Santa Ana River Watershed Alliance
Santiago Creek Greenway Alliance
Santiago Creek Watershed Preservation & Restoration Project
Sea and Sage Audubon
Serrano Creek Conservancy
Sierra Club

Supporting Organizations

Sierra Club Angeles Chapter
Sierra Sage South OC
Silverado-Modjeska Parks & Recreation District
SJC Equestrian Coalition
Stop Polluting Our Newport
Surfrider National
The Conservation Fund
The Nature Conservancy
The Trust for Public Land
Trails for All
Trout Unlimited
Watershed Network
Wetlands Recovery Project
Wild Heritage Planners
Women For: Orange County

Green Vision Project

“To increase the funding for parks, water quality and open spaces in Orange County.”



Workshops & Conferences



Green Vision Map



Updating the Map



Green Vision Matrix

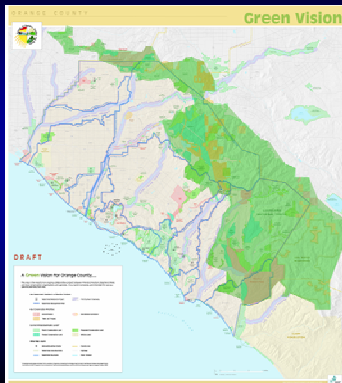
Green Map properties

Mountains & Foothills	Overall Acreage	Acreage Preserved	Acreage to be Preserved
	(approximate)		
Santa Ana Mountains	185	20	165
Oak Flat area	640	0	640
Tin Mine Canyon	1,350	194	1,156
Black Star Canyon	1,075	714	361
Baker Canyon	300	0	300
Hall Canyon	900	0	900
Ladd Canyon	1,360	109	1,251
Silverado Canyon	700	0	700
Williams Canyon	660	302	358
Harding Canyon	484	0	484
Live Oak Canyon	113	0	113
Saddle Creek			
Saddle Crest			

Mountains and Foothills



Mountains and Foothills



Mountains and Foothills



Santa Ana Mountains

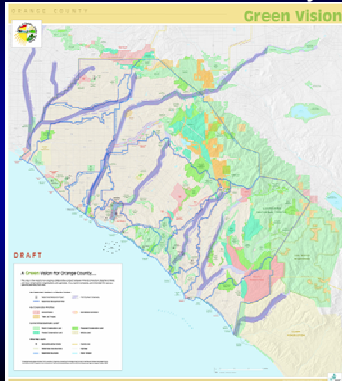
Puente-Chino Hills



Rivers and Parkways



Rivers and Parkways



Rivers and Parkways



Santa Ana
River

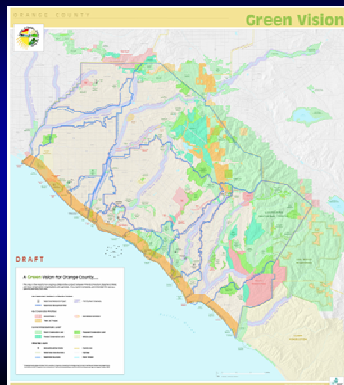
Santiago
Creek



Coastal Lands



Coastal Lands



Coastal Lands



Dana Point

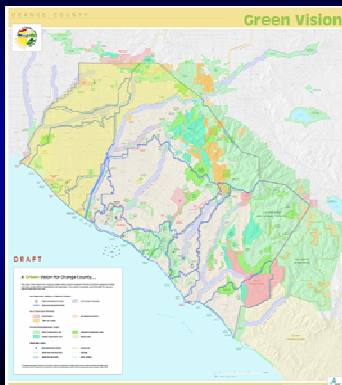
Upper Newport Bay



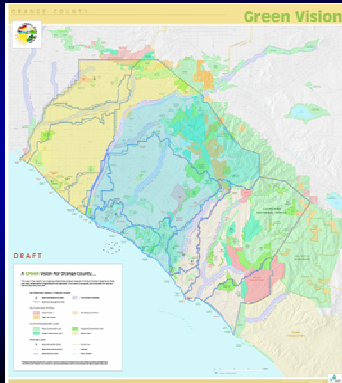
Urban Parks



Urban Parks - Northern



Urban Parks - Central



Urban Parks - Southern



Urban Parks



Mile Square Park

Clark Regional Park



Interpretive & Care Facilities



Interpretive & Care Facilities



Interpretive & Care Facilities



Environmental
Nature
Center

Helena
Modjeska
House



Conservation Benefits Everyone

- Improved health
- Increased property values
- Cleaner air and water
- Healthier communities
- More recreational opportunities



Evolution of Support

- Our process – transparency, communication, debated issues
- Avoided Contentious Projects
 - Southern Extension of the 241 Tollroad
 - Tunnel Under the Forest
 - 57 Freeway Extension Over the Santa Ana River

Evolution of Support

- Supported by 30+ environmental and community groups under the umbrella of FHBP



Piecemeal Approach

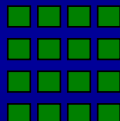


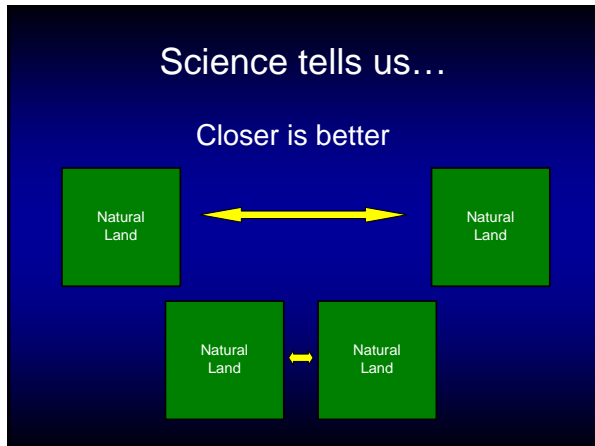
Programmatic Mitigation

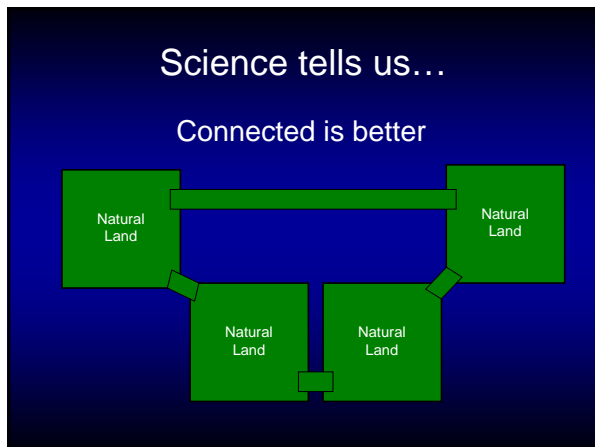
Permanent protection of areas of high ecological value and associated restoration, management and monitoring, to comprehensively compensate for numerous smaller impacts associated with individual transportation projects. Continued function of existing mitigation features such as wildlife passages is not included.

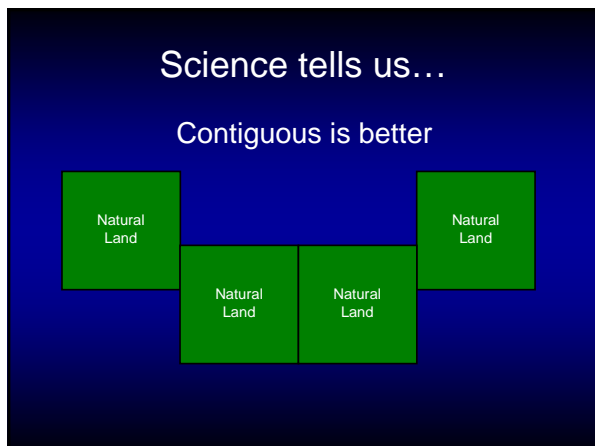
Science tells us...

Bigger is better



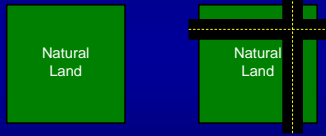






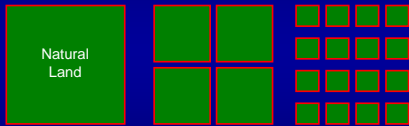
Science tells us...

Roadless is better



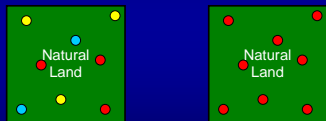
Science tells us...

Fewer edges are better



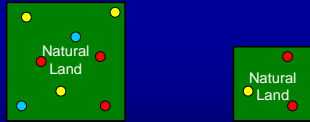
Science tells us...

Species diversity is better



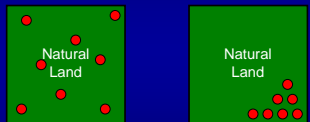
Science tells us...

Bigger habitats have more species



Science tells us...

Species should be well distributed



Reality tells us...

The landscape shows a different story.











The future is in our hands