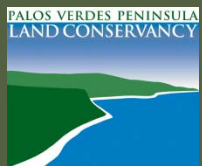


# Palos Verdes Peninsula Land Conservancy



# About the Conservancy

Founded in 1988

21 years acquired over 1500 acres of  
preserved open space

*preserving land and restoring habitat for the  
enjoyment and education of all*

[www.pvplc.org](http://www.pvplc.org)

# About the Conservancy

## Palos Verdes Peninsula Conservancy

Open Space Preserves on  
Palos Verdes Peninsula



Palos Verdes Nature Preserve in  
Palos Verdes

Palos Verdes Nature Preserve,  
located by Trump National Golf Course

Preserves in Rolling Hills Estates

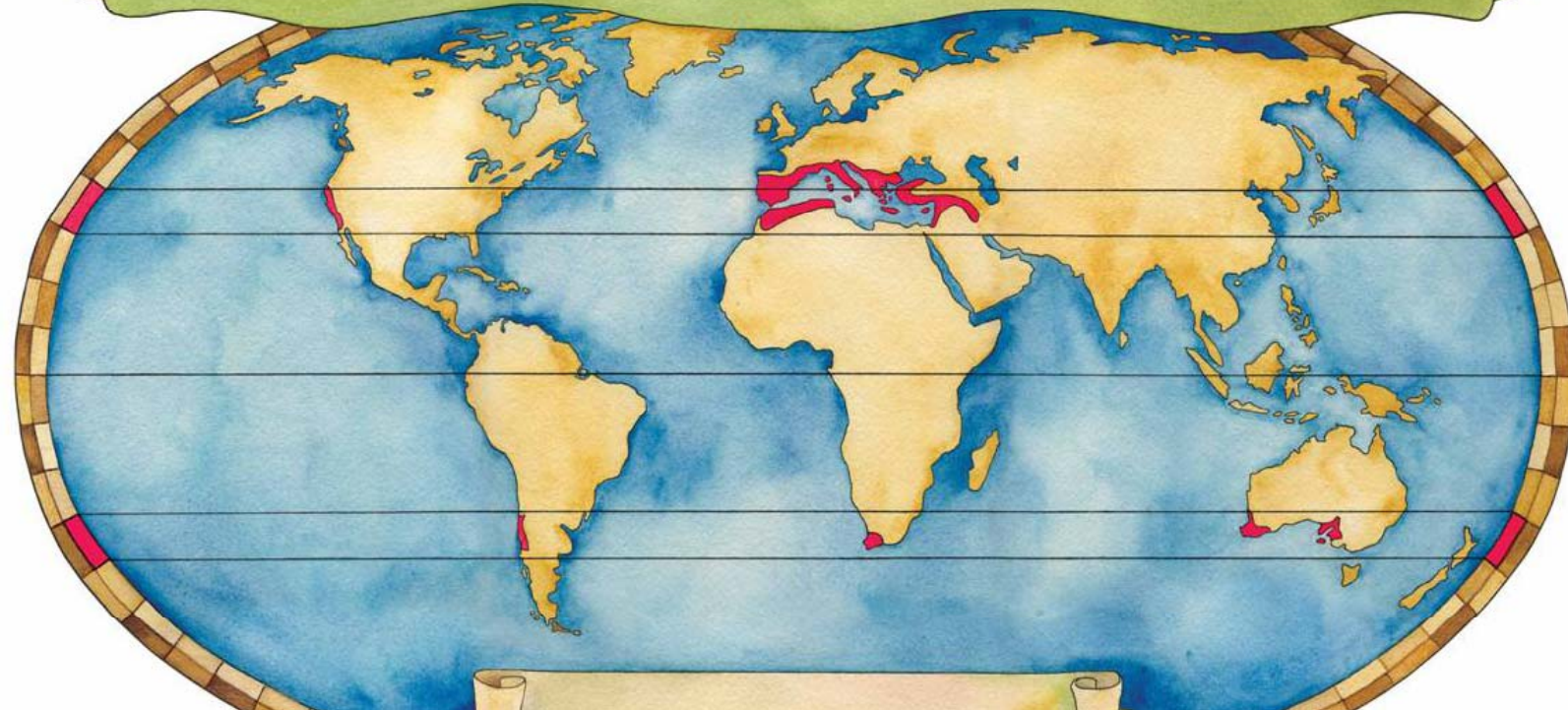
Preserves and Managed Land in San Pedro

Preserving land and restoring habitat  
for the education and enjoyment of all



# A Special Place and Habitat

## World's Mediterranean Climate Zones



# Unique Plants on Palos Verdes

- Catalina crossosoma
- South coast saltbush
- Bright green liveforever
- Santa Catalina Island desert-thorn
- Aphanisma
- Woolly sea-blite



# Special Status Animals

- Palos Verdes blue butterfly
- El Segundo blue butterfly
- California gnatcatcher
- Coastal cactus wren



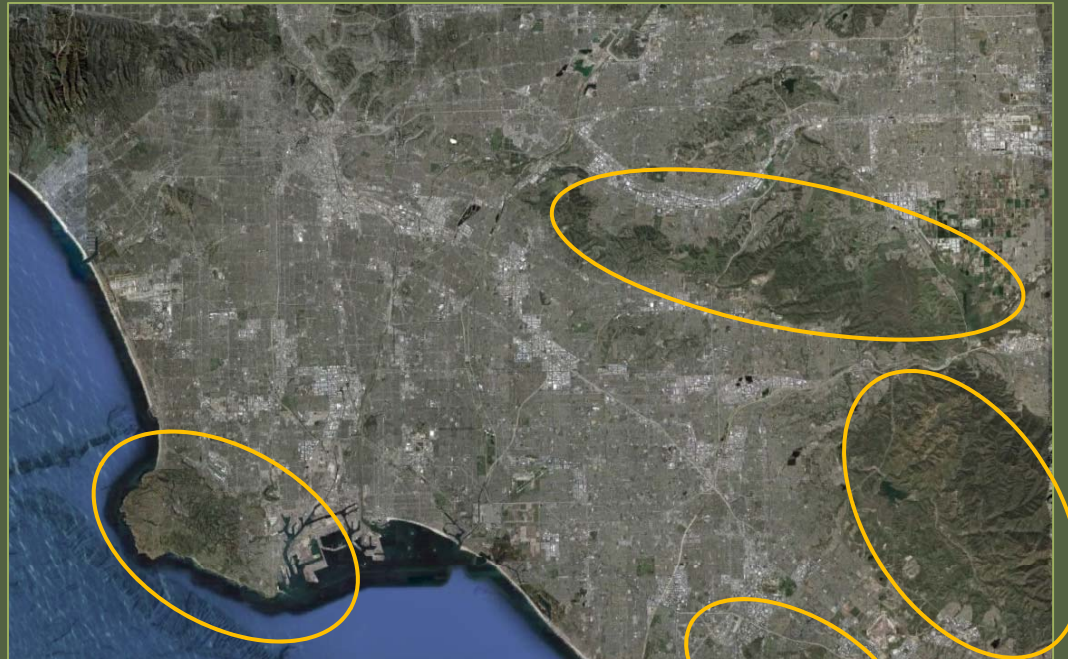
# Stressors on Mediterranean Climate Zones

- Significant loss of habitat
- Plant invasions
- Wildfire
- Climate change
  - Global warming
  - Episodic drought



# Stressors on Mediterranean Climate Zones

- Significant loss of habitat
- Plant invasions
- Wildfire
- Climate change
  - Global warming
  - Episodic drought





# Stressors on Mediterranean Climate Zones

- Significant loss of habitat
- Plant invasions
- Wildfire
- Climate change
  - Global warming
  - Episodic drought



# Stressors on Mediterranean Climate Zones

- Significant loss of habitat
- Plant invasions
- Wildfire
- Climate change
  - Global warming
  - Episodic drought



# Carbon Sequestration

□ Jon Keeley – Ecologist for US Department of the Interior

- Botanist
- Ecologist
- Fire scientist
- Scientist



# Carbon Sequestration

- Coastal Sage Scrub a good resource





# PVPLC/UCLA's Effort

- Restoring coastal sage scrub enables carbon sequestration



# Carbon Sequestration Project

- Work with high school and university students



# Carbon Sequestration Project

- First step: Develop measure of biomass for each species in habitat
- Rule of thumb: 50% of biomass is carbon





# Carbon Sequestration Project

- Species to date:
  - Lemonade berry
  - California buckwheat
- Current species
  - Purple sage
  - California bush sunflower



# Carbon Sequestration Project

## Benefits of using students



# Carbon Sequestration Project Goal

- Develop model of average biomass contained within a hectare of coastal sage scrub



# Carbon Sequestration Project

- Compute amount of CO<sub>2</sub> sequestered



# Carbon Sequestration Project

- Apply carbon offset credits for habitat restoration



# Carbon Sequestration Project Benefits

- Local investment
- PVPLC restores more habitat
- Plants and animals have more room to live!



