



SOUTHERN CALIFORNIA ASSOCIATION of GOVERNMENTS

Regional Implementation of SB 375 for Healthier Communities *Friends of Harbors, Beaches and Parks Green Vision Workshop*

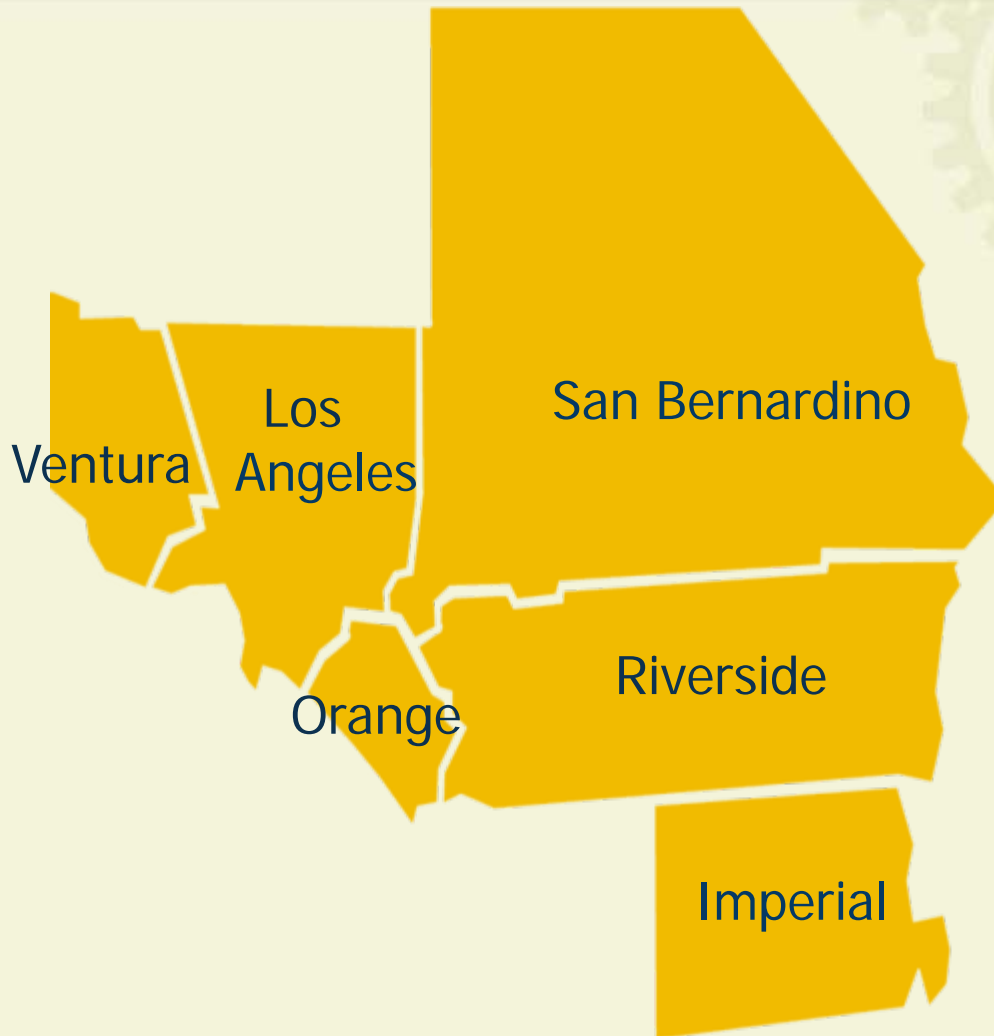
September 15, 2011

Huasha Liu
Director, Land Use &
Environmental Planning

Presentation Outline

- I. Overview of SCAG and the Region
- II. Regional Challenges
- III. SB 375 to Address Challenges & Opportunities
- IV. Scenarios and Outcomes
- V. 2012 RTP/SCS Financing Shortfall
- VI. Next Steps

I. Overview of SCAG and the Region

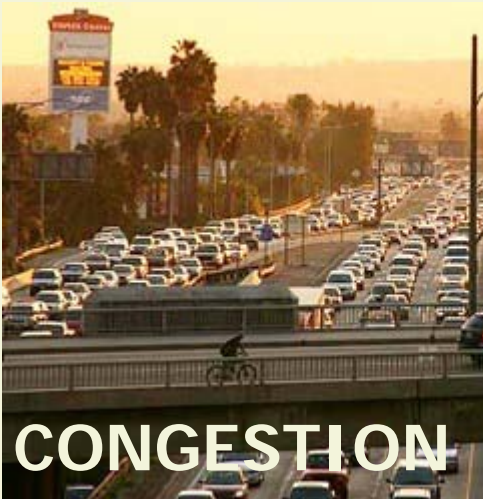


- Metropolitan Planning Organization (MPO) and Council of Governments (COG)
- Governed by a Regional Council of 84 local elected officials
- 6 counties, 191 cities and over 18 million residents
- 15th largest economy in the world

Overview of SCAG and the Region (cont'd)

- Polycentric development patterns which are dependent on automobile and foreign oil
- Racial/ethnic diversity
- Diversity of community types, interests and needs
- Economic & social disparities
- Gateway to the Pacific Rim
- Fragmented institutional system

II. Regional Challenges



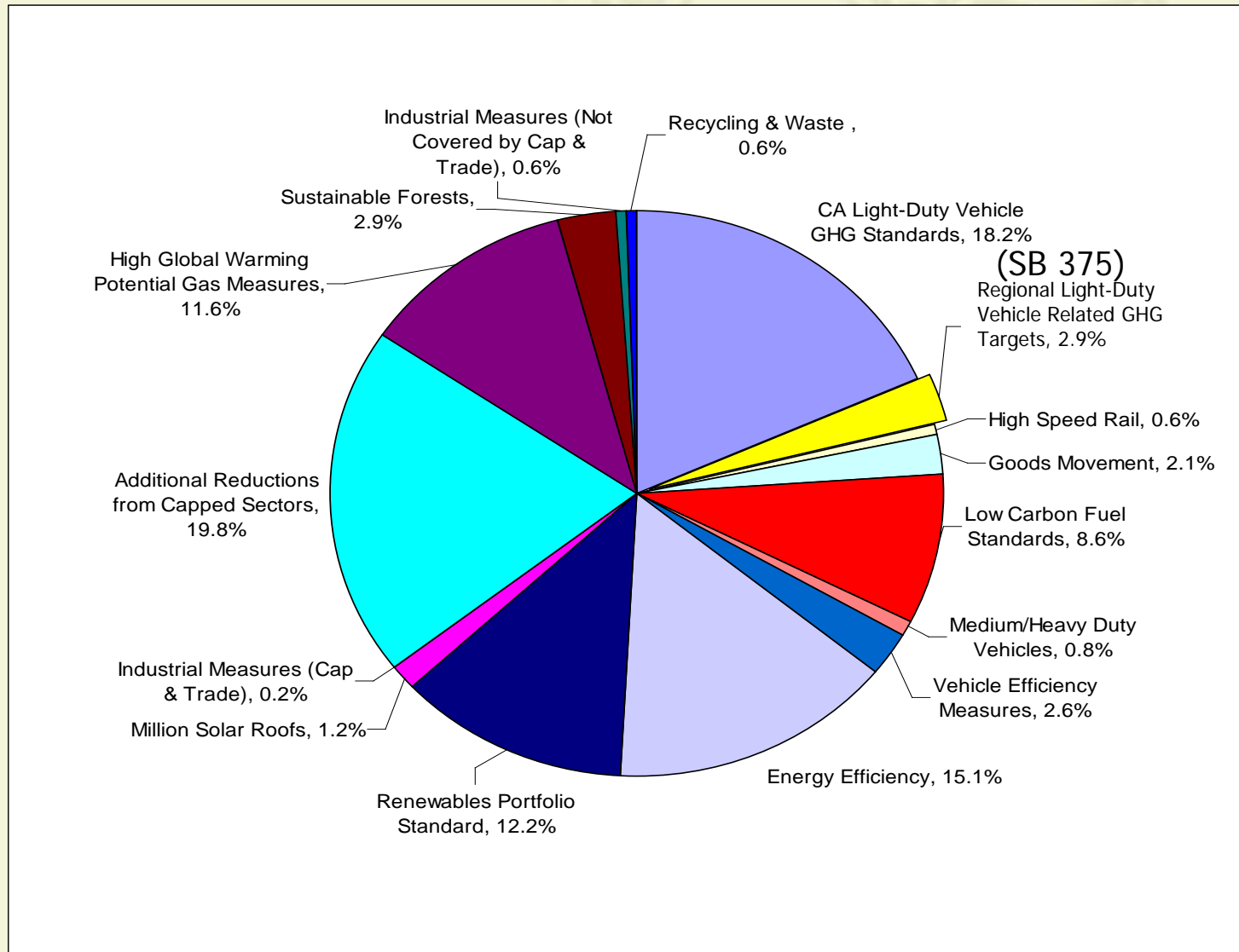
II. Regional Challenges (cont'd)

- Continues to be one of the most congested and polluted regions in the nation
- Declining regional competitiveness in jobs and wages
- Fiscally strained with extensive aging infrastructure
- Climate change will adversely impact regional air pollution and water supply

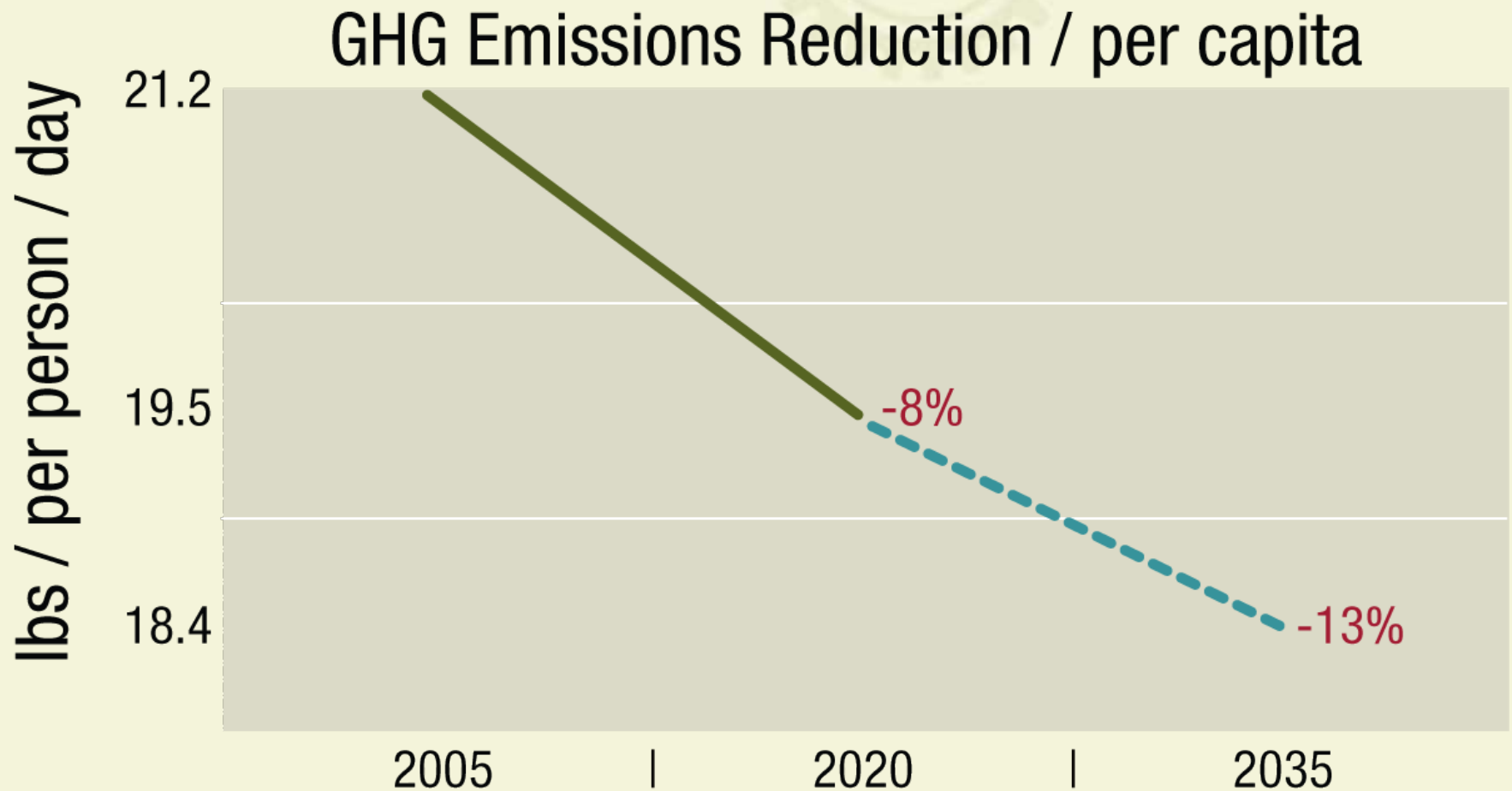
III. SB 375 to Address Challenges and Opportunities

Regional Objectives

AB 32 Adopted GHG Reduction Estimates by Measures (-174 MMT)



GHG Targets for SCAG Region (You and Me)



SB 375 Objectives

- Contributes to global solutions to address climate change
- Improves regional sustainability and quality of life
- Provides the public with more choices

What Does SB 375 Do?

- Promotes integrated planning
- Provides a target/goal of being sustainable
- Encourages conservation of energy, water and open space via Sustainable Communities Strategy (SCS)
- Offers CEQA streamlining provisions

III. SB 375 to Address Challenges and Opportunities

How can we get there?

Regional Transportation Plan (RTP) and Sustainable Communities Strategy (SCS)



- 25-year long-range transportation plan for the region
- Developed and updated every 4 years
- 2008 RTP: \$531.5 billion in transportation projects
- 2012 RTP underway now!
- As required by SB 375, the SCS includes eight required elements aiming to better integrate regional and local land use & housing strategies with transportation investments and transportation policies to achieve the state's greenhouse gas emissions (GHG) reduction targets

Whom We've Been Talking To

- Local jurisdictions, Sub-regions
- County Transportation Commissions
- Local Agency Formation Commissions (LAFCOs)
- Plans and Programs Technical Advisory Committee (P&P TAC)
- Air Resources Board (ARB)
- GLUE Council
- Other Metropolitan Planning Organizations (MPOs)
- Private Sector (e.g. BIA)
- Environmental Stakeholders
- Other Stakeholders

Policy Options for Investment & Development

1. Land Use
2. Transportation Network (Highways and Arterials)
3. Travel Demand Management (TDM)
4. Transportation System Management (TSM)
5. Non-Motorized Transportation System
6. Transit / Rail
7. Pricing

2011 SCAG REGIONAL CONFERENCE & GENERAL ASSEMBLY



B)

2010

Existing and Planned Rail Investments



Integrated Land Use Planning



Land Use Strategies

Outcomes & Benefit



Jobs – Housing Balance
Higher Density / Mixed-Use
Pedestrian Friendly
Transit Orientation
Development Location, Type and Size
Preservation of Resources Areas
Increase Pervious Surfaces
Industrial / Brownfield Conversion
Improved Sense of Place



More Transit & Walk/Bike Trips
Fewer & Shorter Auto Trips
Less VMT & Congestion
More Affordable Housing
Improved Air Quality
Less Runoff / Better Water Quality
Decreased Energy & Water Consumption
Better Public Health



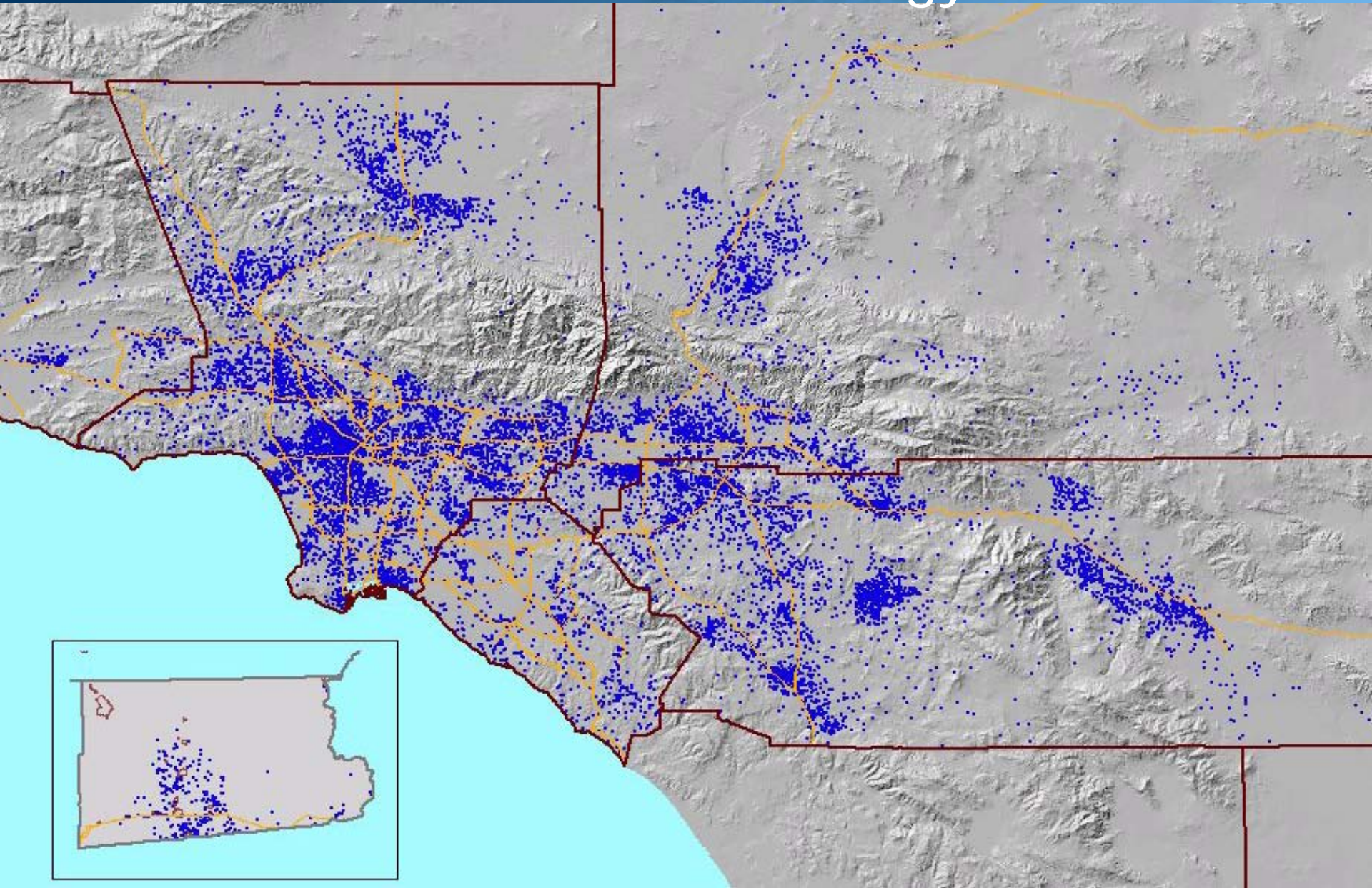
Compass Blueprint – Precursor to SB 375

- A voluntary participation program
 - An overall Growth Vision adopted in 2004 and 2% Strategy to direct more growth into urban centers and transit corridors
 - Since 2005, provided technical assistance to local partners through demonstration projects to implement the 2% Strategy



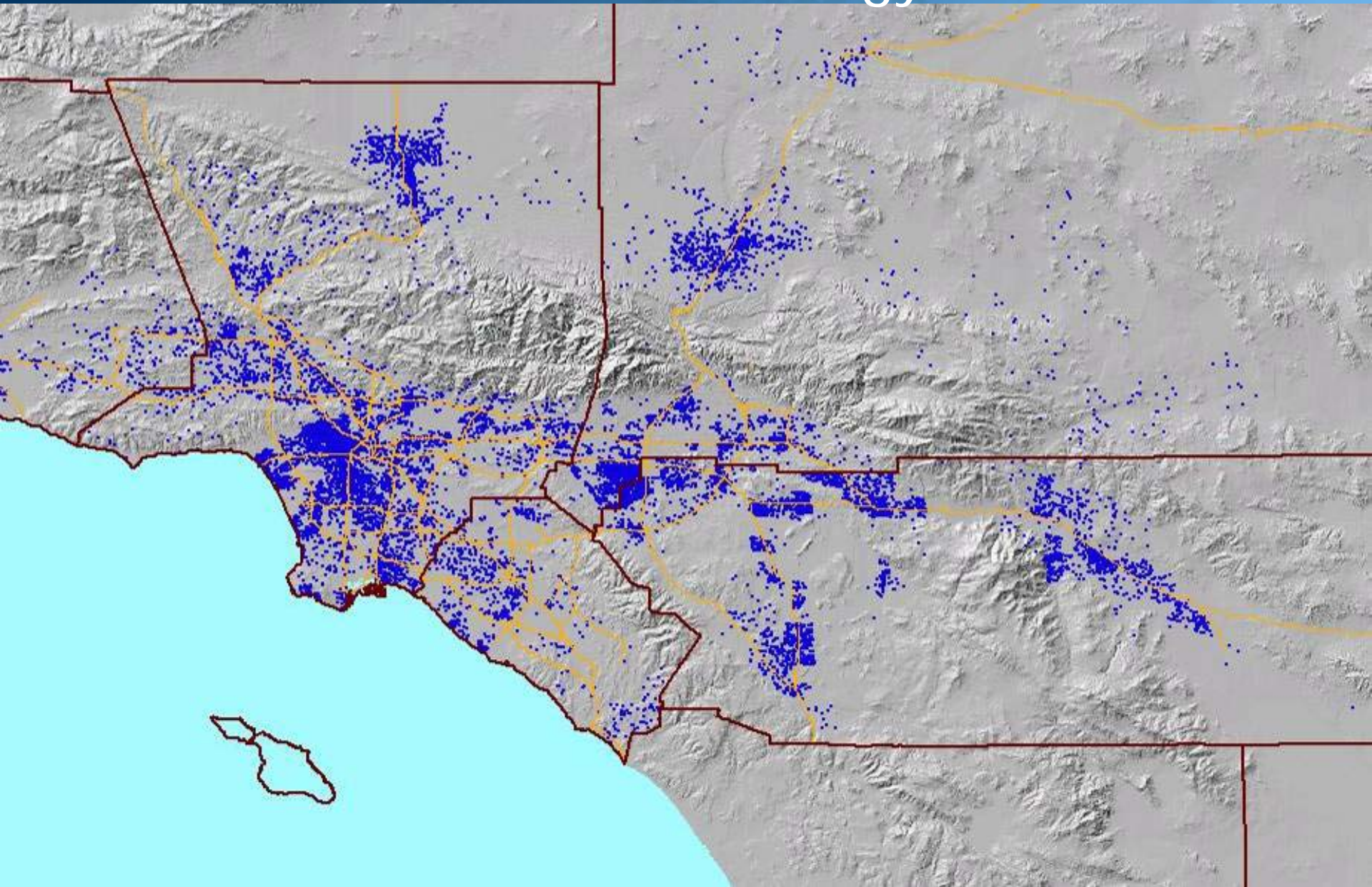
Household Growth: 2010-2035

Without 2% Strategy



Household Growth: 2010-2035

With 2% Strategy



Compass Blueprint - Status To Date

- Projects to promote land use, transportation and housing integration, and improve the environment
- Funded 112 projects (over 90 completed)
- Invested \$10.4 million
- 68 local partners
- Currently 65 new projects

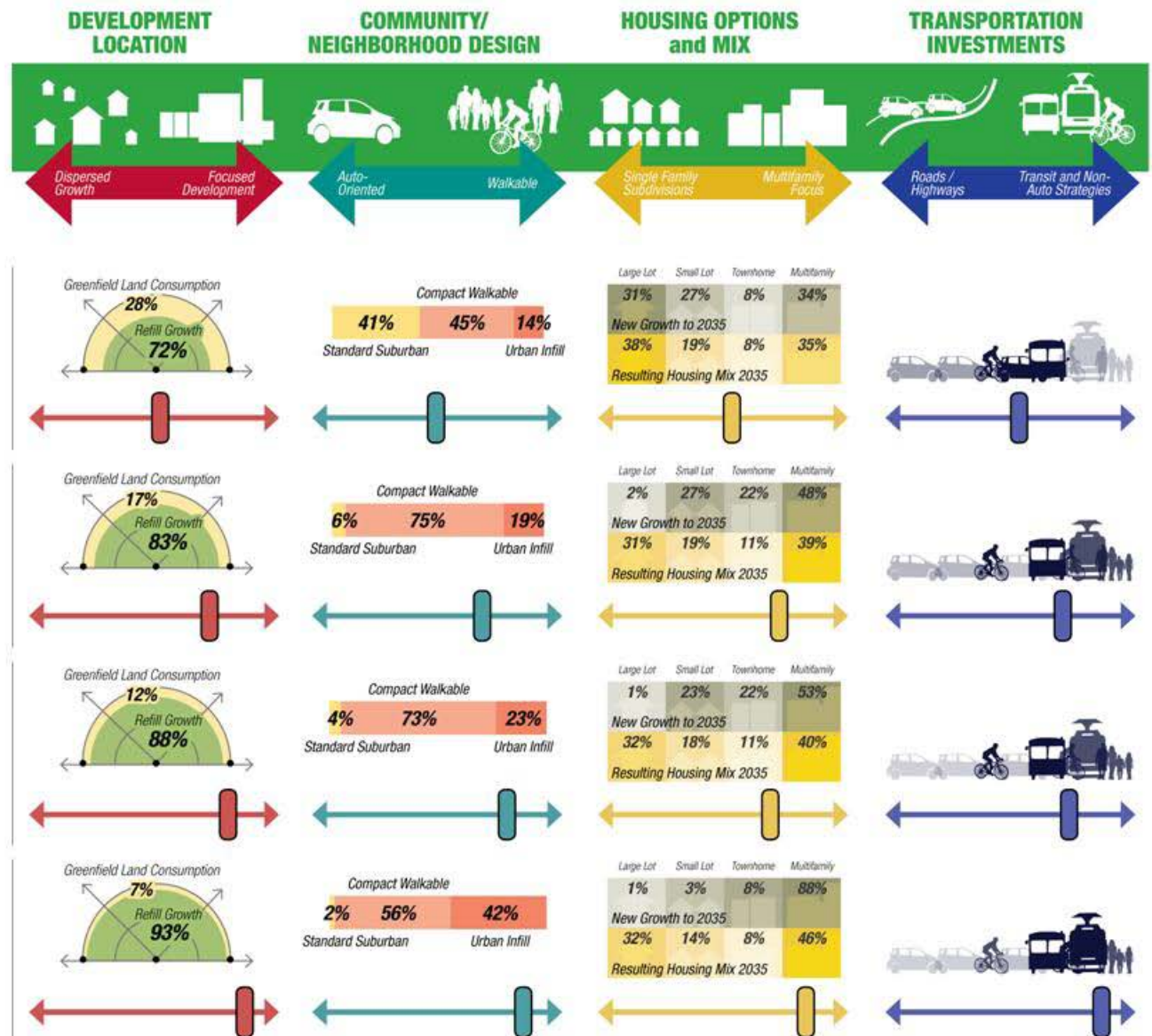


IV. Scenarios and Outcomes



What will all of this mean in the **Big Picture**?

Scenarios Snapshot

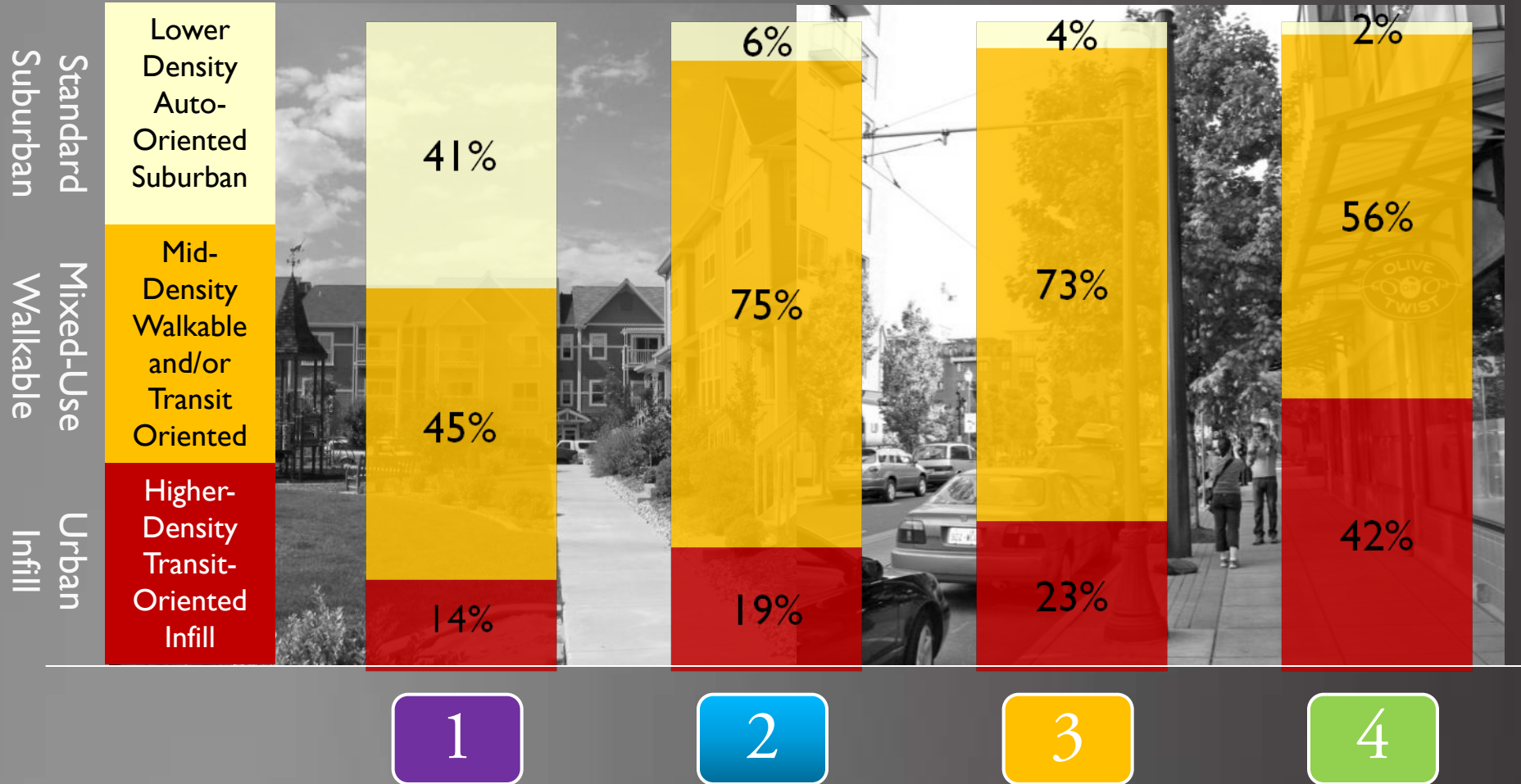


Development Types

New Growth 2008-2035



■ Standard Suburban ■ Mixed-Use Walkable ■ Urban Infill



Housing Product Mix

New Housing Units 2008-2035



■ Multifamily ■ Townhome ■ Small Lot Single Family ■ Large Lot



**Anticipated
Demand**

1

2

3

4

28

Housing Product Mix

All Housing Units in 2035 (Existing + New)

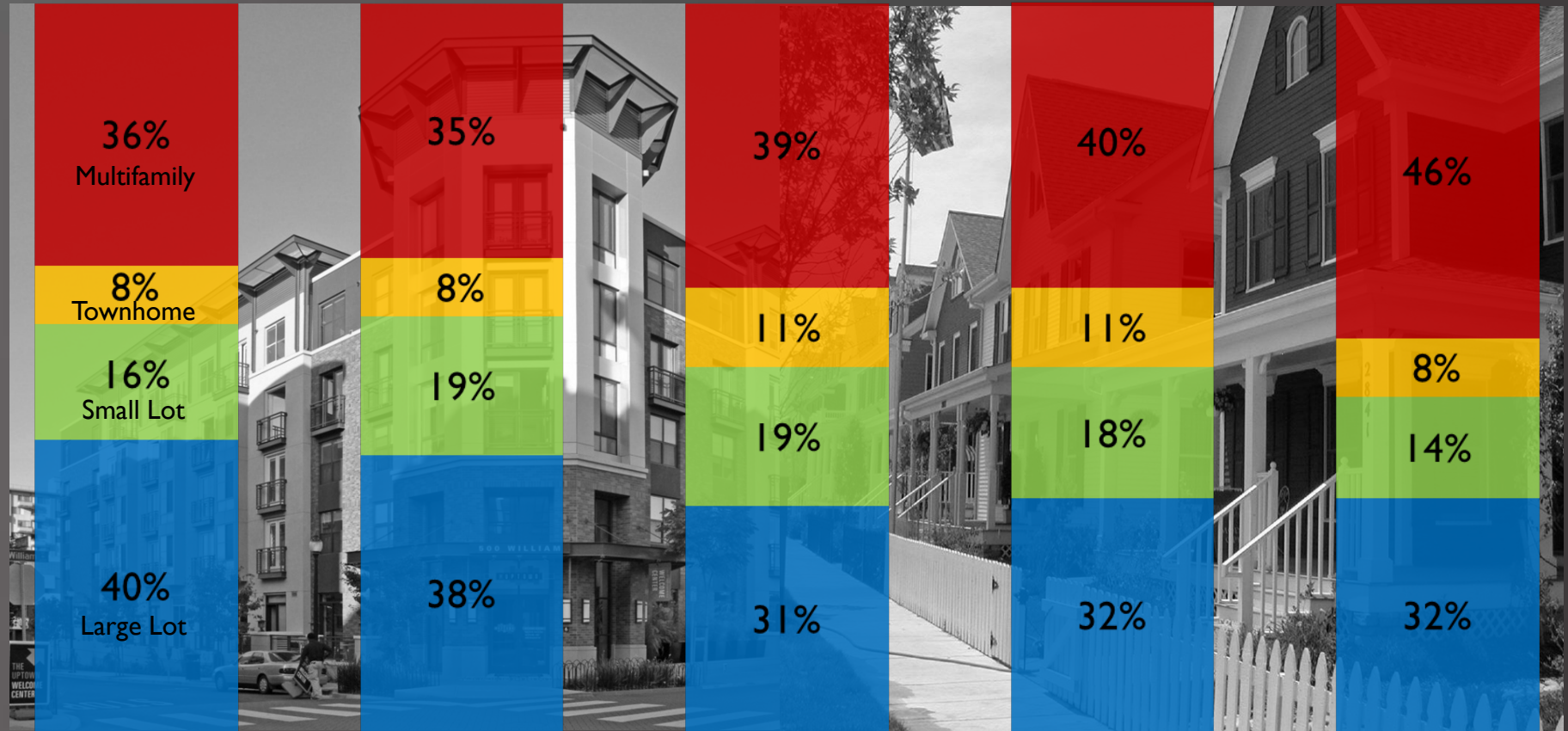


■ Multifamily

■ Townhome

■ Small Lot Single Family

■ Large Lot



Existing
(2008)

1

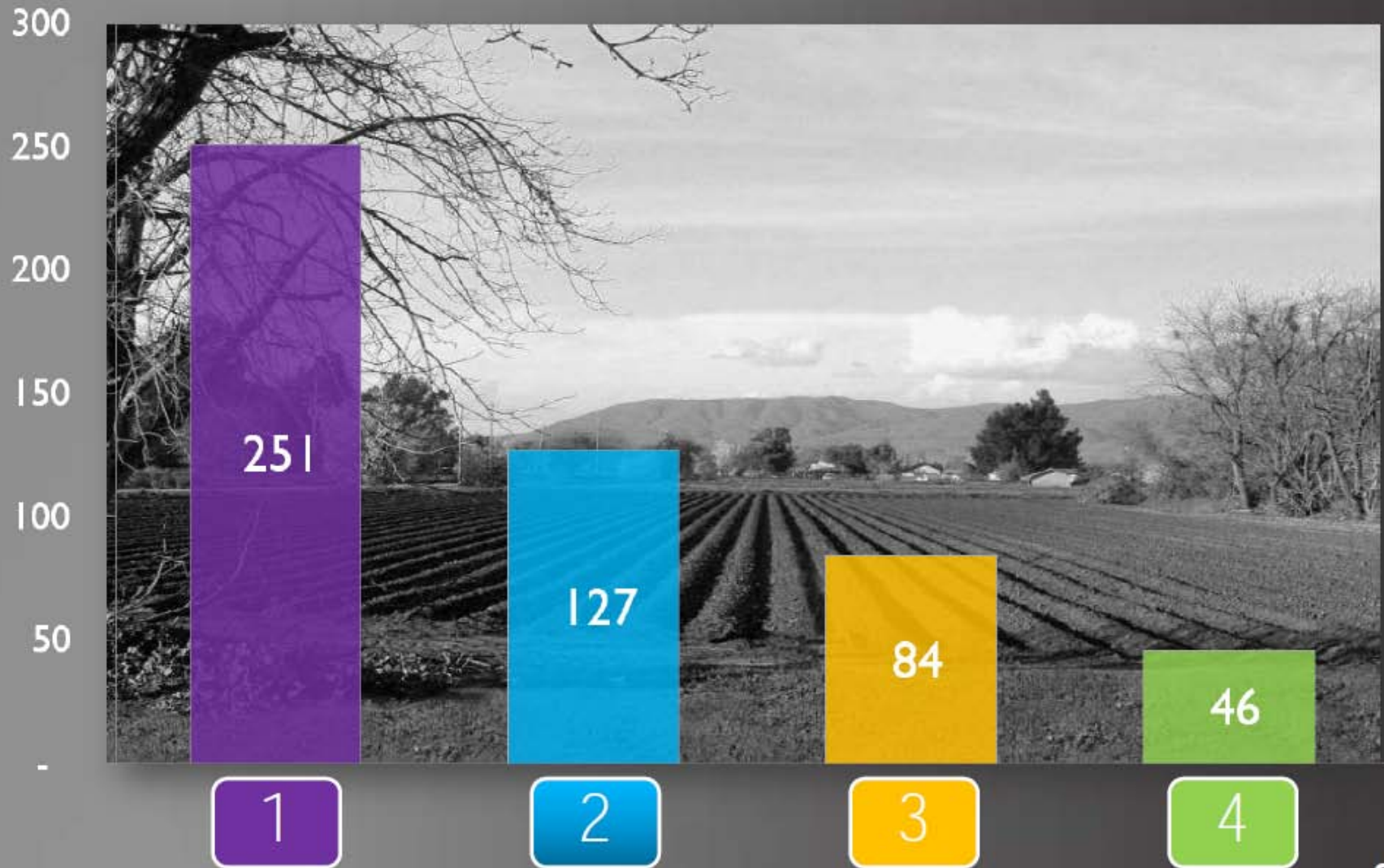
2

3

4

Land Consumed

Square Miles



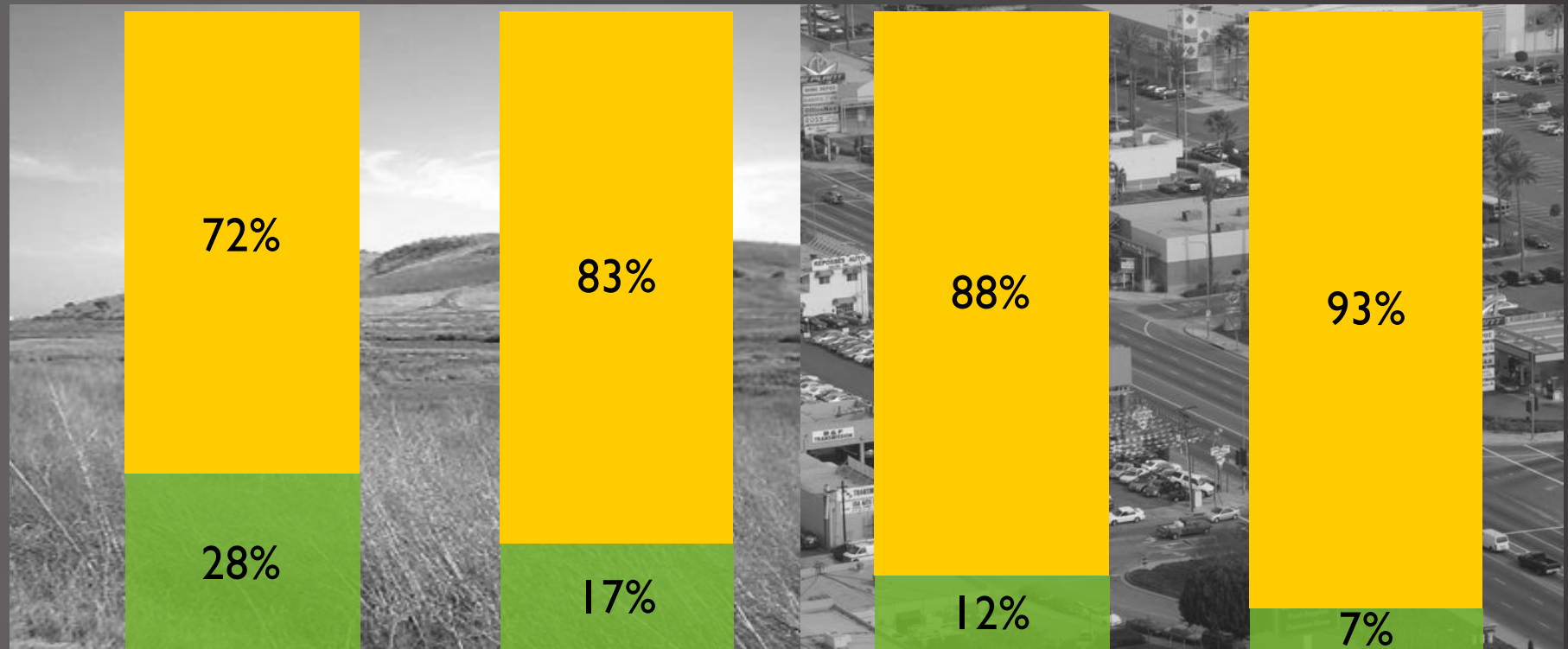
Greenfield vs. Infill / Reuse

New Development 2008-2035



■ Greenfield

■ Reuse



1

2

3

4

Local Infrastructure Costs

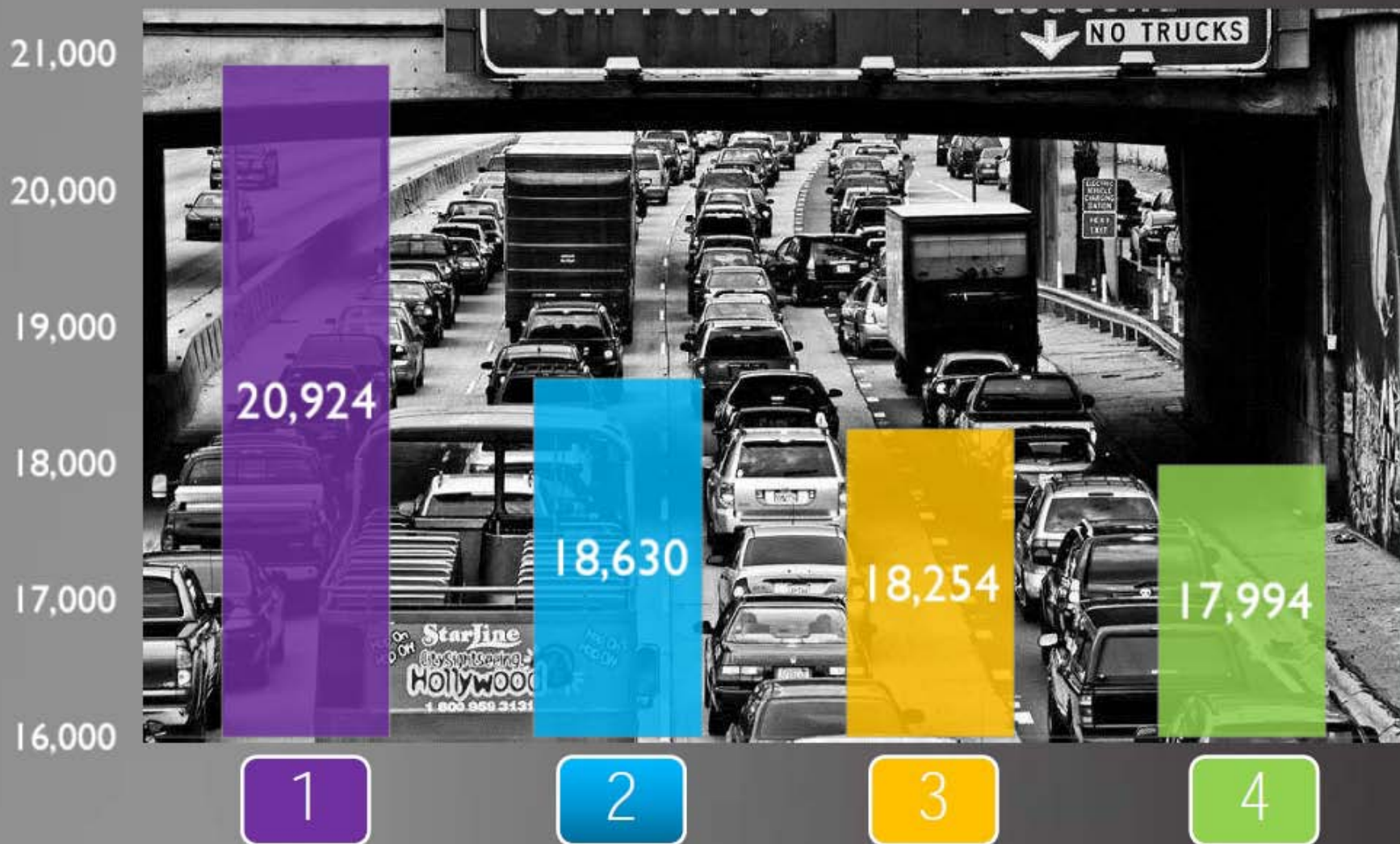
Capital & Operations & Maintenance Costs for New Growth, 2008-2035



Includes capital costs and general fund O&M expenditures for local roads, wastewater and sanitary sewer, water supply, and parks & recreation

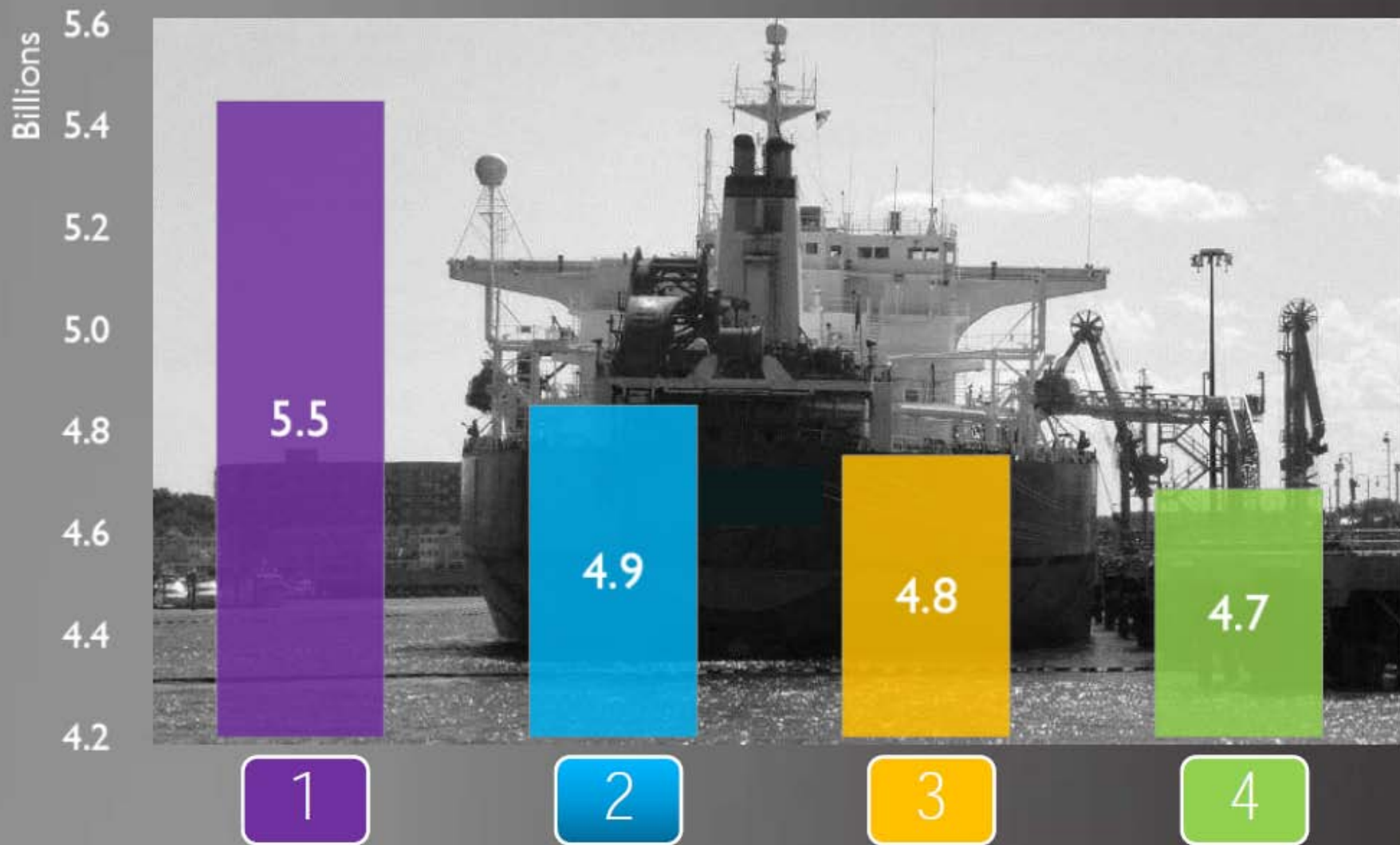
Vehicle Miles Traveled

Annual per household, 2035



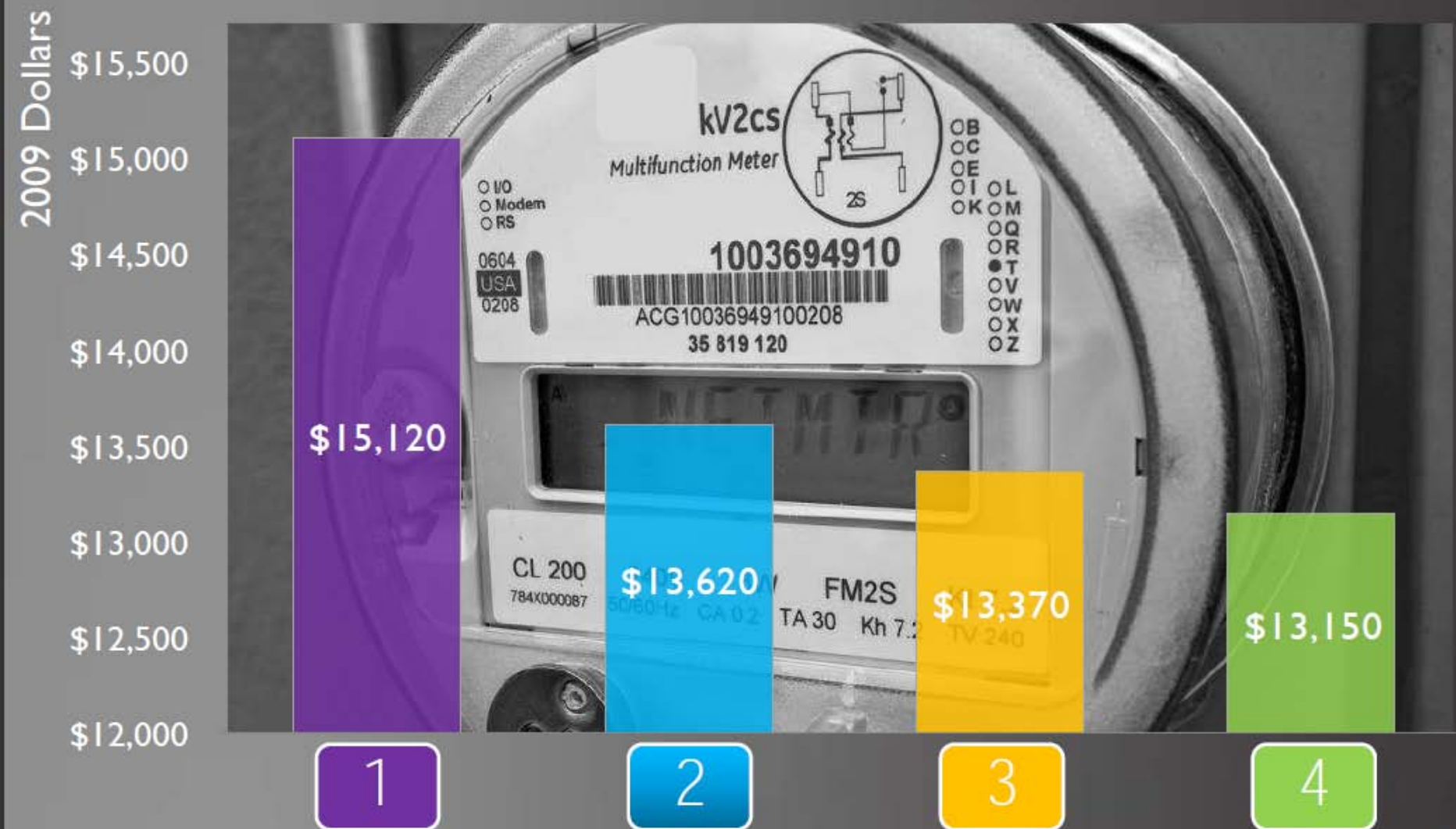
Fuel Consumption

Billions of Gallons, Annual, 2035



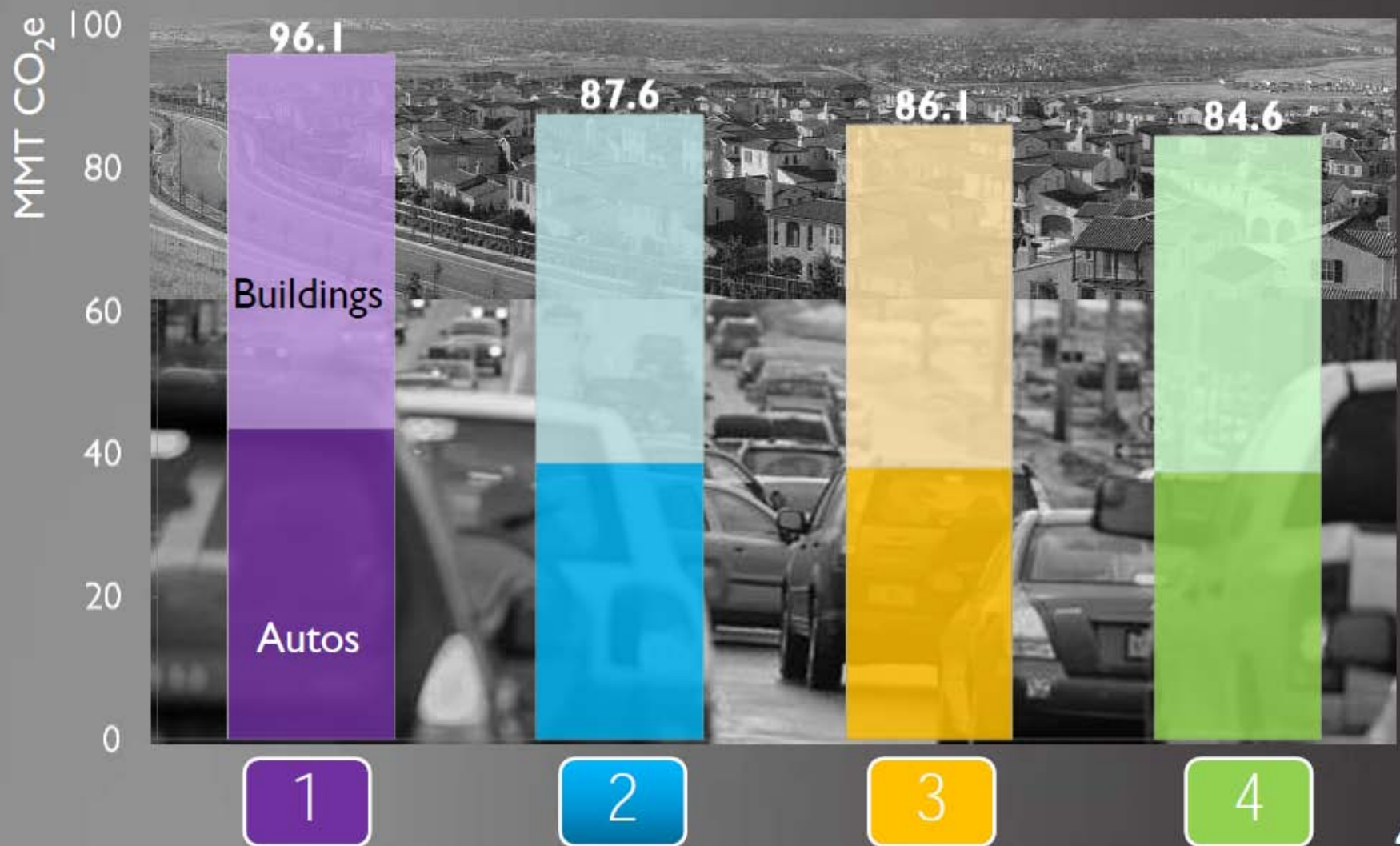
Household Costs

Annual Costs for Transportation, Building Energy, and Water, 2035



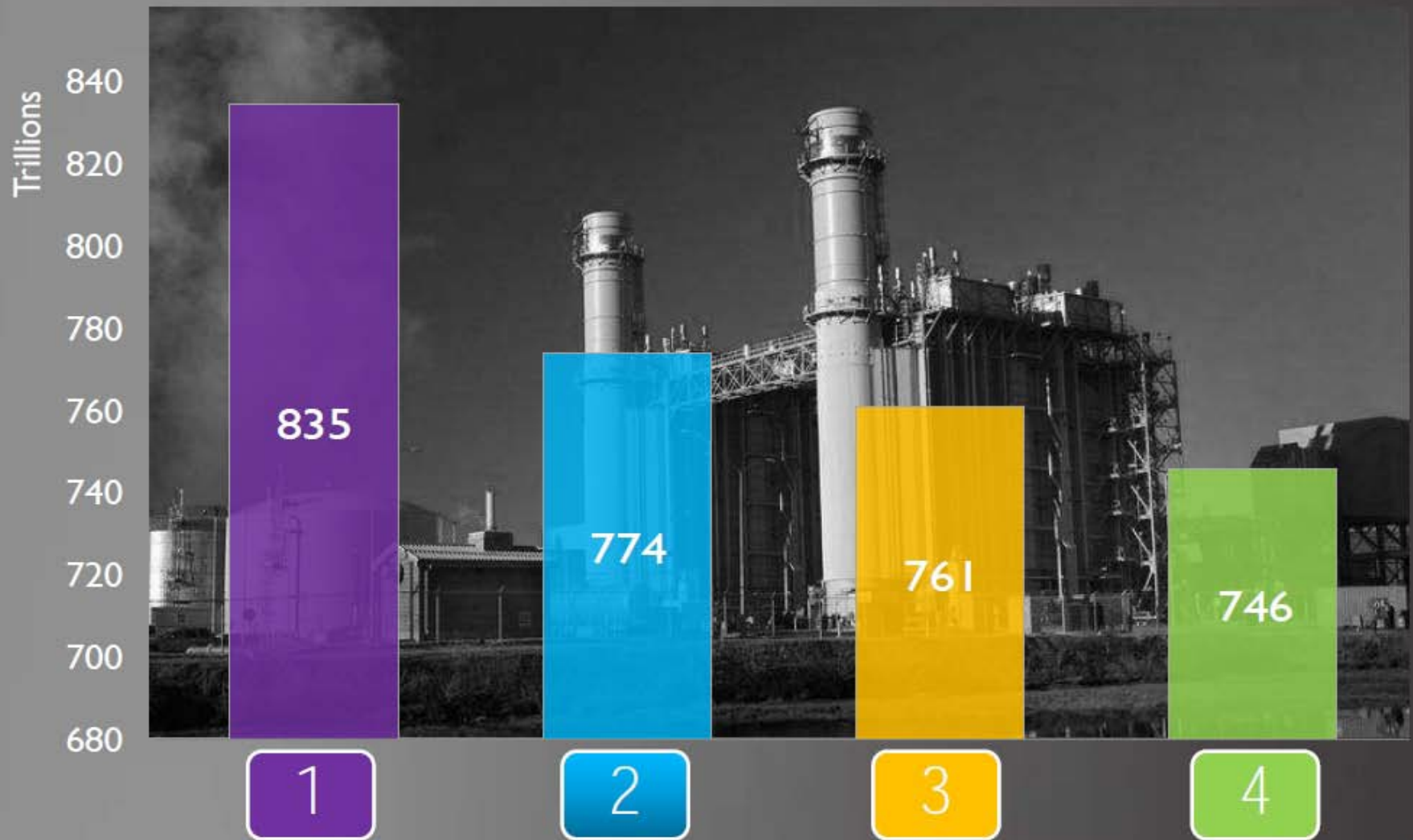
Greenhouse Gas Emissions

Annual Emissions from Buildings and Auto Transportation, 2035



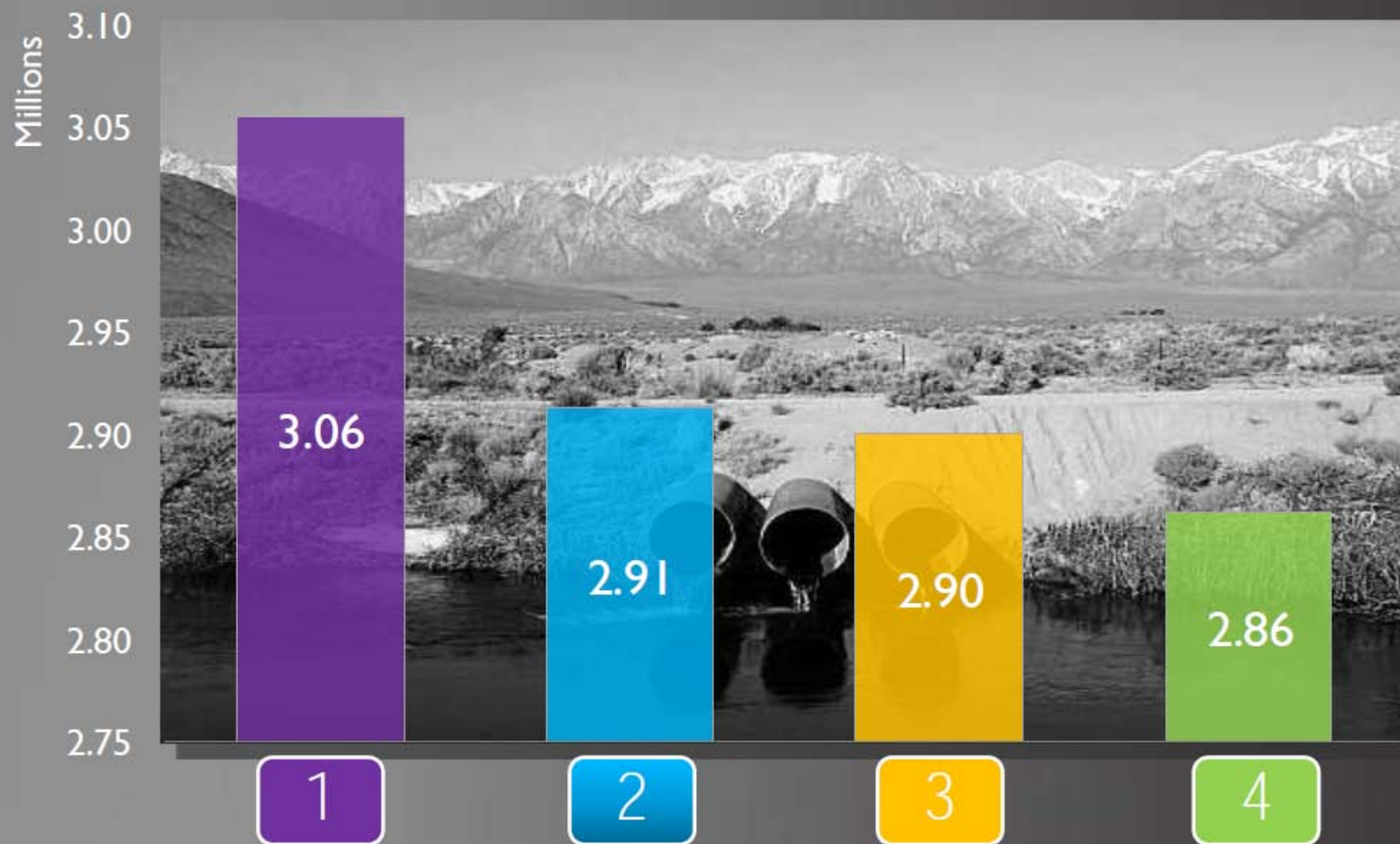
Building Energy Use

Trillion BTU, Annual, 2035



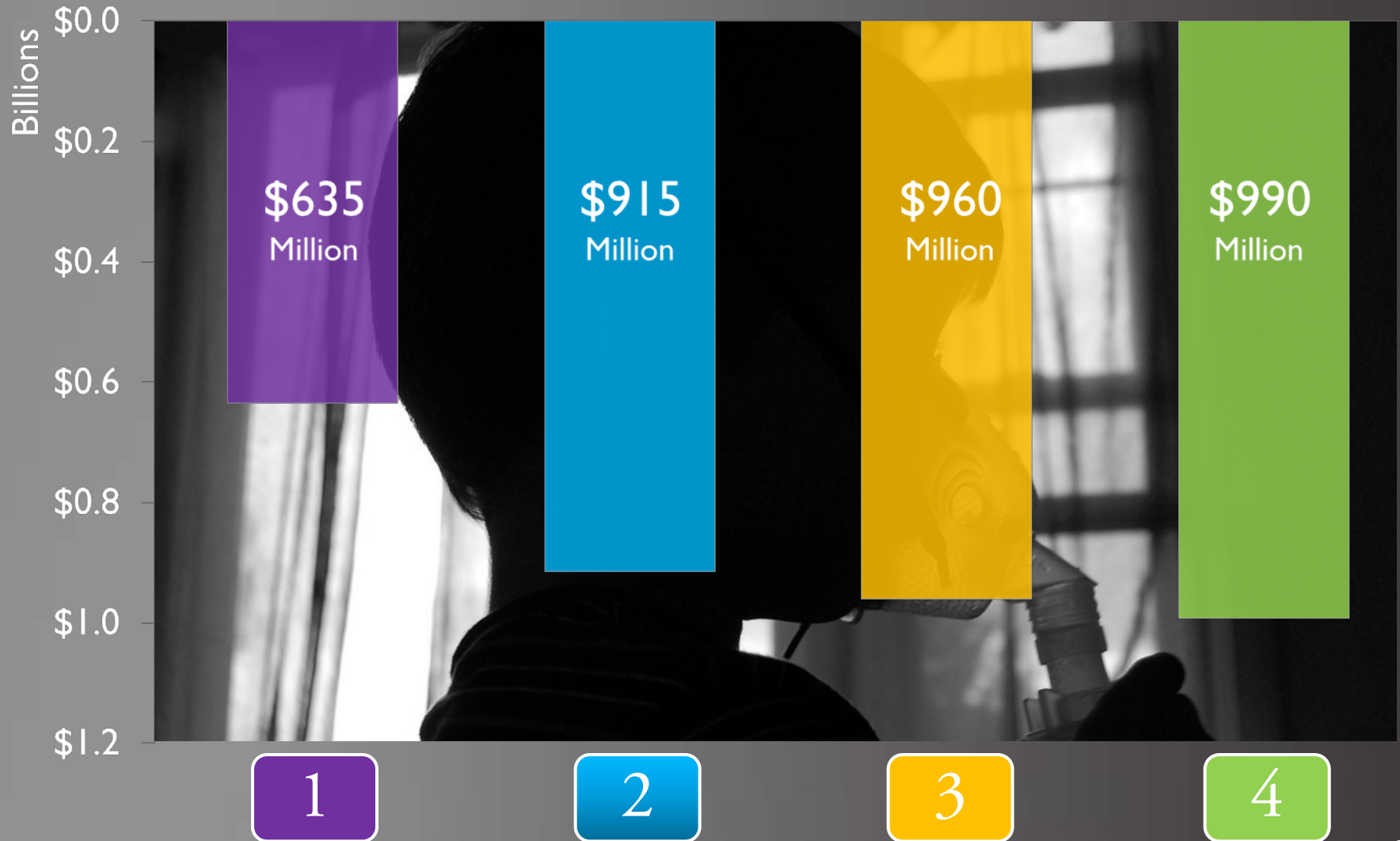
Water Consumption

Acre Feet (Annual in 2035)



Respiratory Health Impacts

Cost reduction from status quo due to health incidents, Annual in 2035

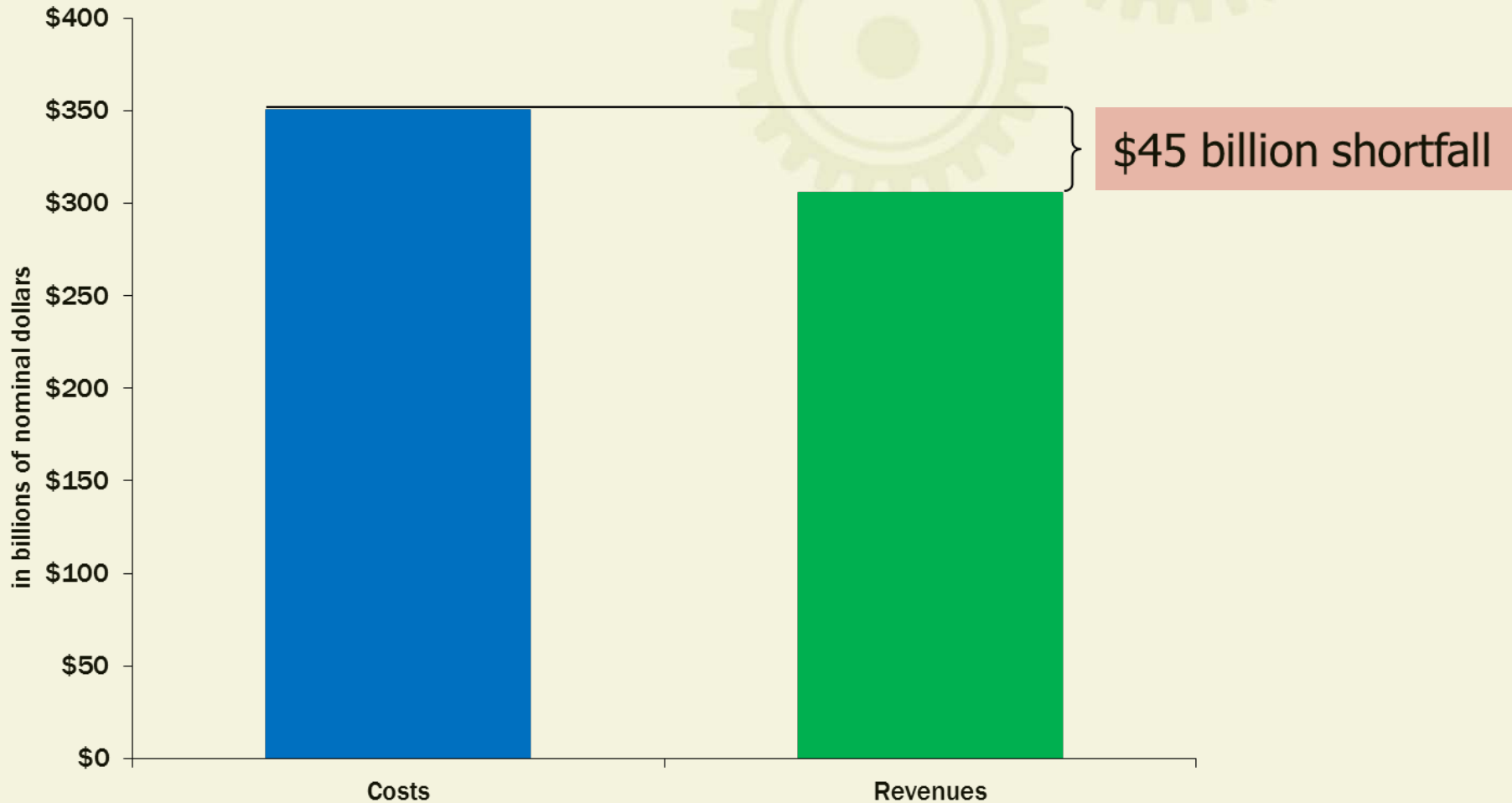


The OC SCS

- Addresses all required elements of SB 375 and SCAG's Framework and Guidelines
- 15 distinct land use and transportation Sustainability Strategies
- More than 200 Sustainability Practices enumerated in the OC SCS
- SCAG will incorporate OC SCS as transmitted

V. 2012 RTP/SCS Shortfall

Initial Shortfall (Committed Costs – Core Revenue)



Cost of existing commitments exceed our existing revenue

What is not included in the Draft Committed Cost Estimate?

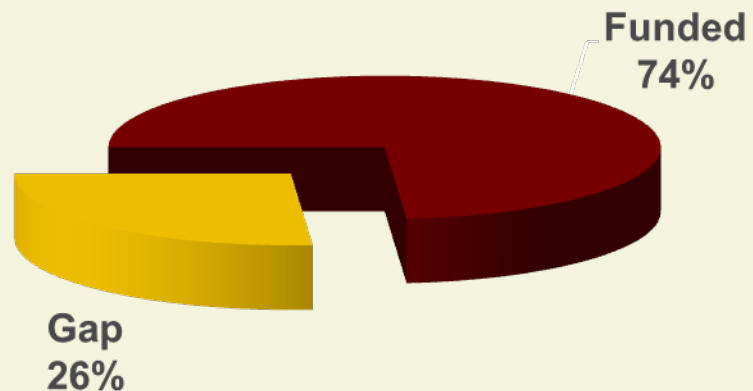
- Reducing unmet transit, local roads, and highway needs
- Improve level of effort to maintain existing conditions or
- Improve level of effort to achieve a state of good repair
- New regional project initiatives (e.g., East-West Freight Corridor, High Speed Rail)



Regional Transit O&M and Preservation Needs

High-Level Needs through 2035 (in nominal dollars)

- \$176.6 billion total
- \$130.3 billion funded
- \$46.4 billion gap



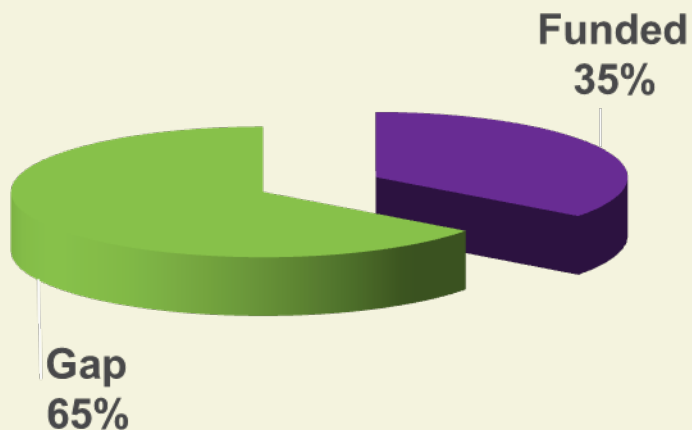
Source: California Transit Association, Caltrans, Federal Transit Administration, *California Unmet Transit Funding Needs: FY2011 – FY2020*, January 31, 2011

Regional Local Streets and Roads Needs

High-Level Estimate of Needs Through 2035*

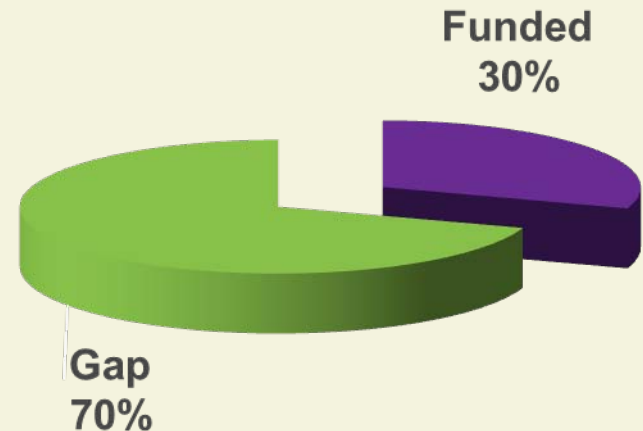
Maintain Current Conditions (in nominal dollars)

- \$87.0 billion total
- \$30.6 billion funded
- \$56.4 billion gap



State of Good Repair (in nominal dollars)

- \$101.4 billion total
- \$30.6 billion funded
- \$70.8 billion gap

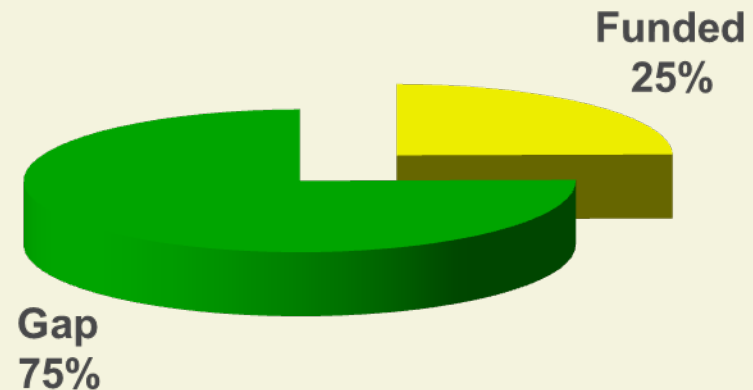


* Estimated from 10-year needs or cost-to-maintain estimate

Regional State Highway Operations and Protection

High-Level Needs through 2035 (in nominal dollars)

- \$67.3 billion total
- \$16.7 billion funded
- \$50.6 billion gap



* Estimated from gap between goal-constrained and fiscally-constrained needs in
2011 Ten-Year SHOPP Plan

VI. Next Steps

December
2011

Release of draft RTP/SCS for review and comment through extensive public participation process

Dec. 2011 -
March 2012

RTP/SCS Workshops with elected officials
(1-2 per county)

April 2012

SCAG adopts 2012 RTP/SCS

For more information
please contact

Huasha Liu

Director, Land Use and Environmental Planning
liu@scag.ca.gov



SOUTHERN CALIFORNIA
ASSOCIATION of GOVERNMENTS
www.scag.ca.gov